

Traffic

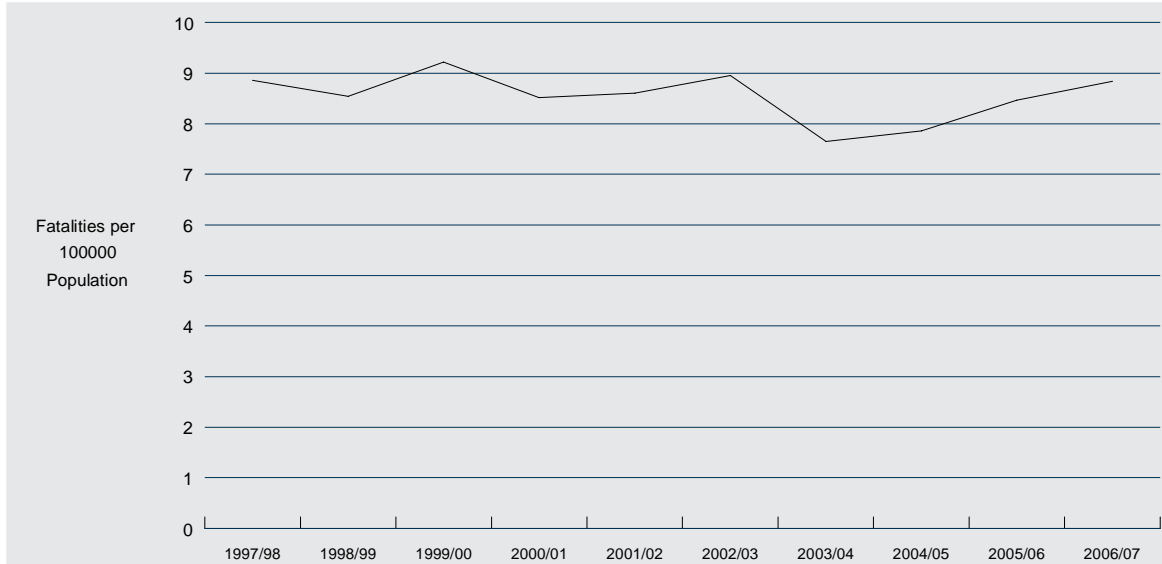
This section contains information relating to traffic crashes, speed, red light camera notices and random breath tests within Queensland.

All data included in this section were provided by the State Traffic Support Group, Queensland Police Service and are current as at 4 September 2007.

Data relating to traffic crashes and injuries other than fatalities were not available at the time of publication.

Traffic

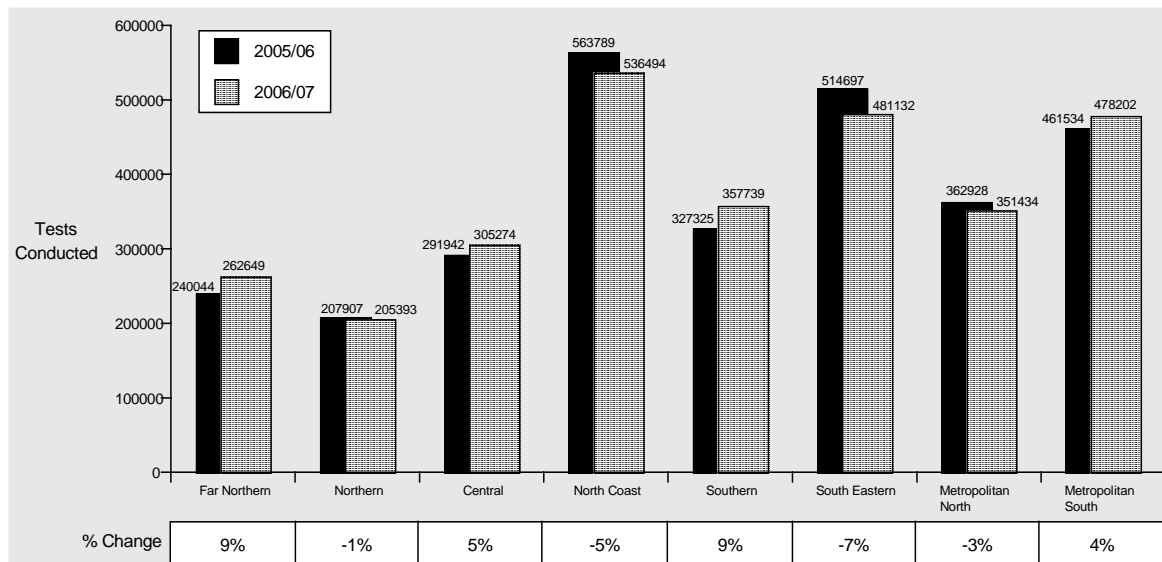
Road Fatalities - Queensland



The National Road Safety Strategy 2001-2010 aims to reduce the annual number of road deaths per 100000

population by 40 percent to no more than 5.6 deaths per 100000 population by December 2010.

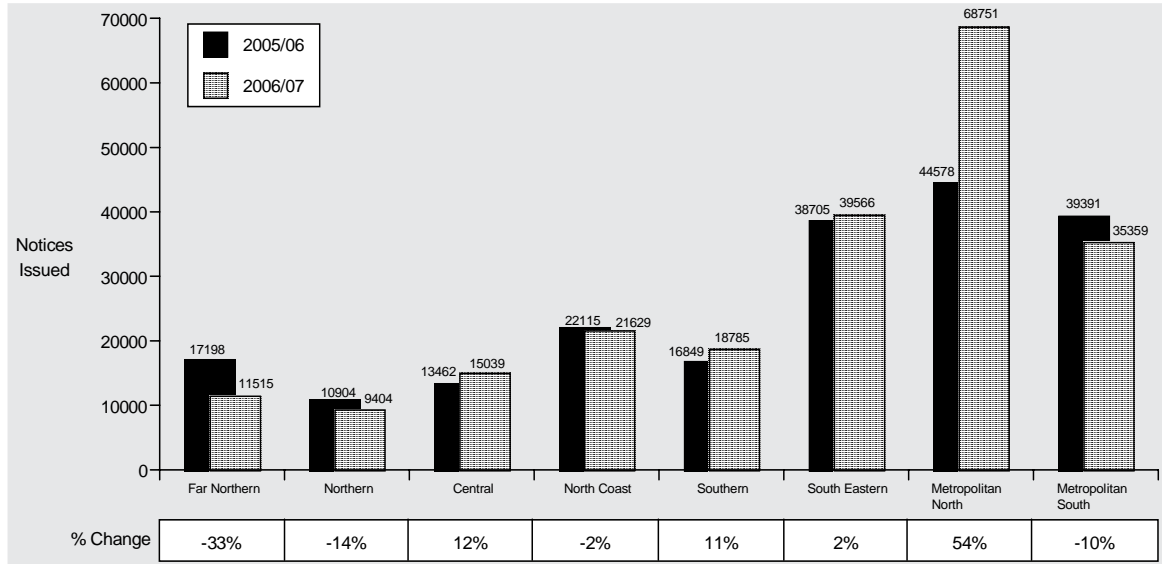
Random Breath Tests - Queensland by Region^{^*}



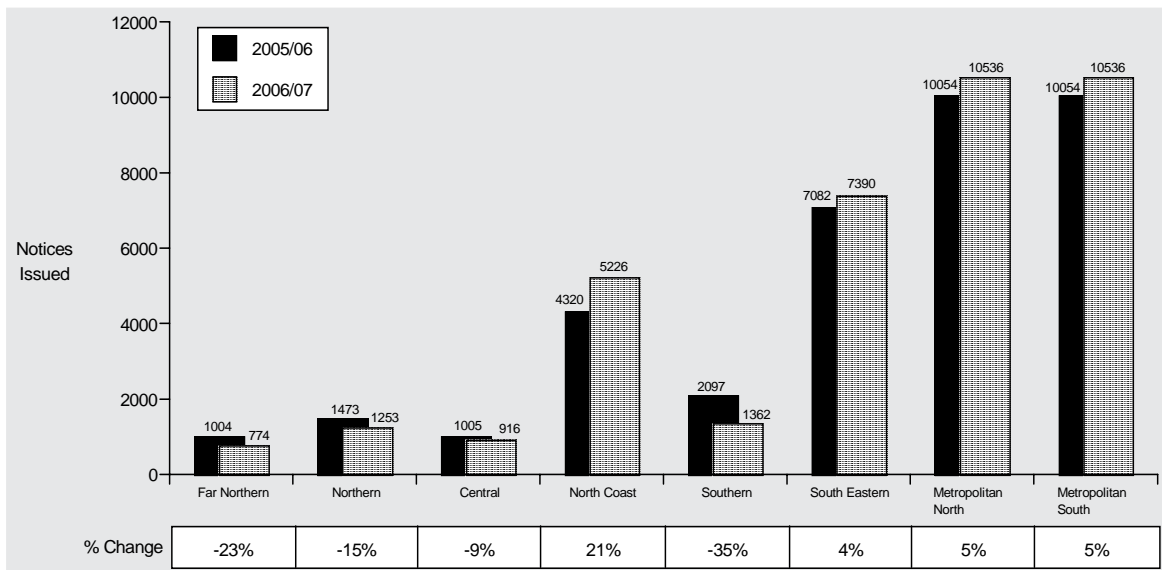
[^] The aggregate of region totals do not equate to the number of tests conducted statewide.
^{*} The total is not inclusive of State Traffic Task Force figures

Traffic

Speed Camera Notices - Queensland by Region



Red Light Camera Notices - Queensland by Region



Notices issued within the metropolitan area are not recorded for individual regions. Therefore, the total for

this area is distributed evenly between the two metropolitan regions.

