

# Traffic

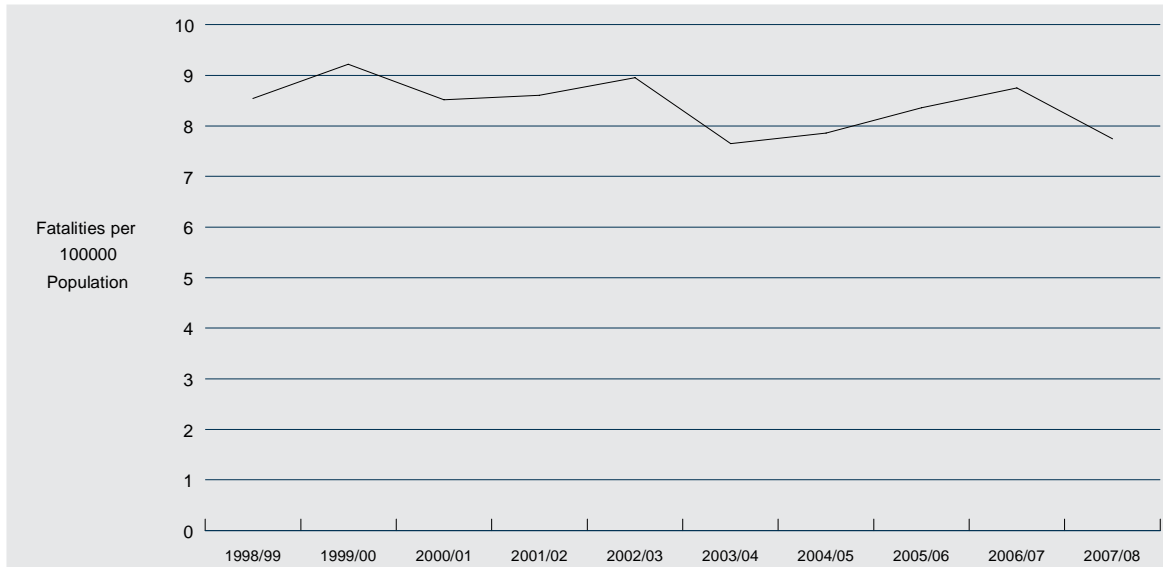
This section contains information relating to traffic crashes, speed, red light camera notices and random breath tests within Queensland.

All data included in this section were provided by the State Traffic Support Group, Queensland Police Service and are current as at 4 August 2008.

Data relating to traffic crashes and injuries other than fatalities were not available at the time of publication.

# Traffic

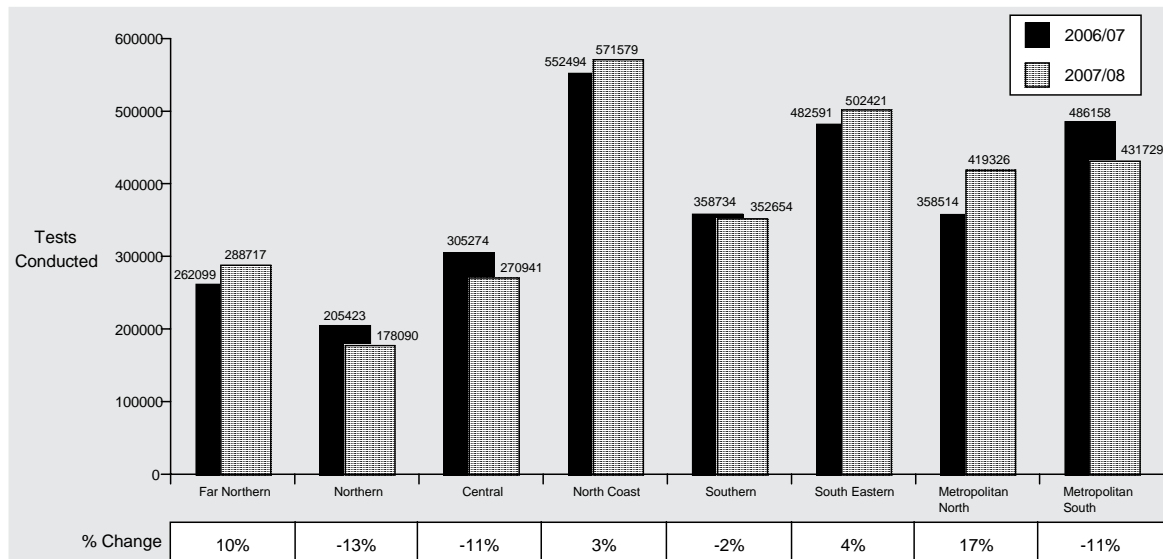
## Road Fatalities - Queensland



Queensland's road fatality rate for the 2007/08 financial year was 7.8 fatalities per 100,000 population. This is the second lowest road fatality rate recorded in Queensland for a financial year since records began in

1952. The lowest recorded road fatality rate for Queensland was 7.7 during the 2003/04 financial year, and the greatest was 32.1 during the 1970/71 financial year.

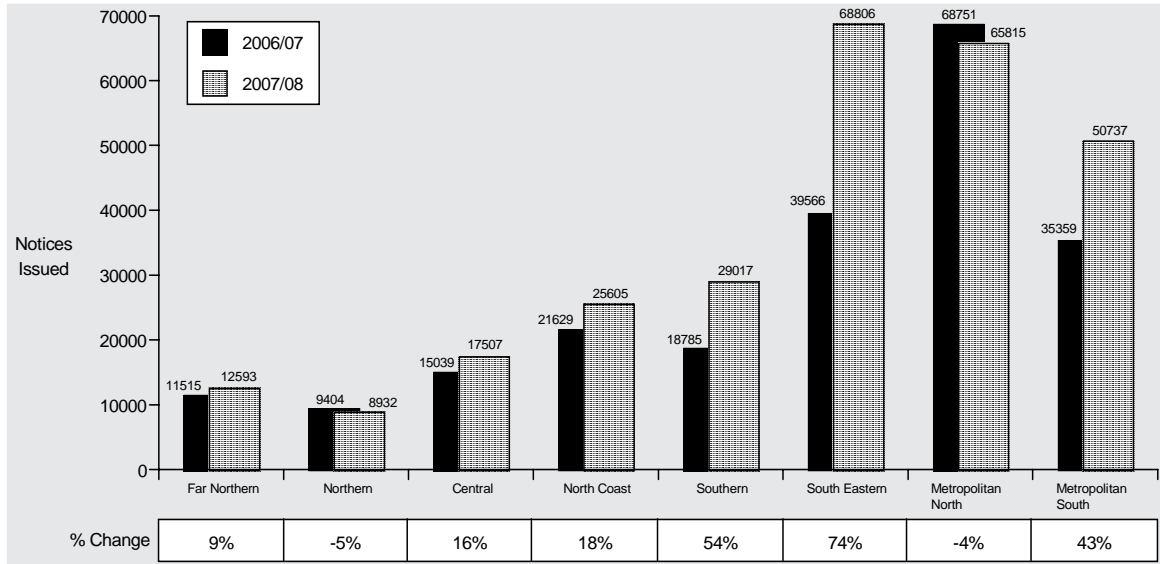
## Random Breath Tests - Queensland by Region<sup>^\*</sup>



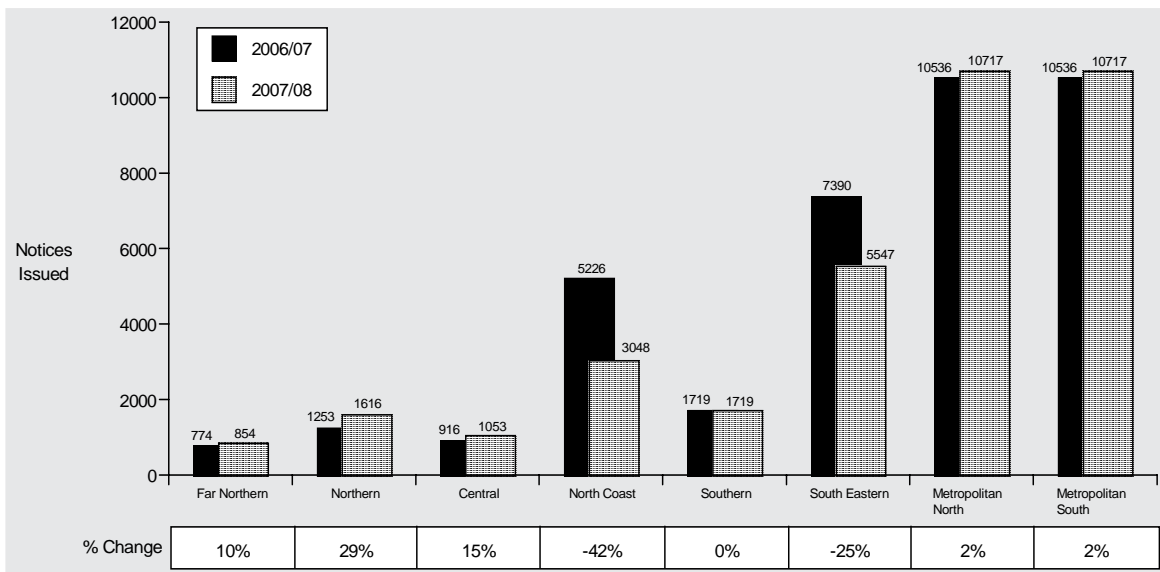
<sup>^</sup> The aggregate of region totals do not equate to the number of tests conducted statewide.  
<sup>\*</sup> The total is not inclusive of State Traffic Task Force figures

# Traffic

## *Speed Camera Notices by Region - Queensland*



## *Red Light Camera Notices by Region - Queensland*



Notices issued within the metropolitan area are not recorded for individual regions. Therefore, the total for

this area is distributed evenly between the two metropolitan regions.