

Monthly Crime Trends

The graphs in this section provide monthly data for selected offence categories from July, 1999 (1999/00 financial year) to June, 2009 (2008/09 financial year), expressed as a rate, thereby factoring in the size of the Queensland population for each year. All crime statistics appearing in these graphs are comparable over the ten year period except where indicated with a break in continuity.

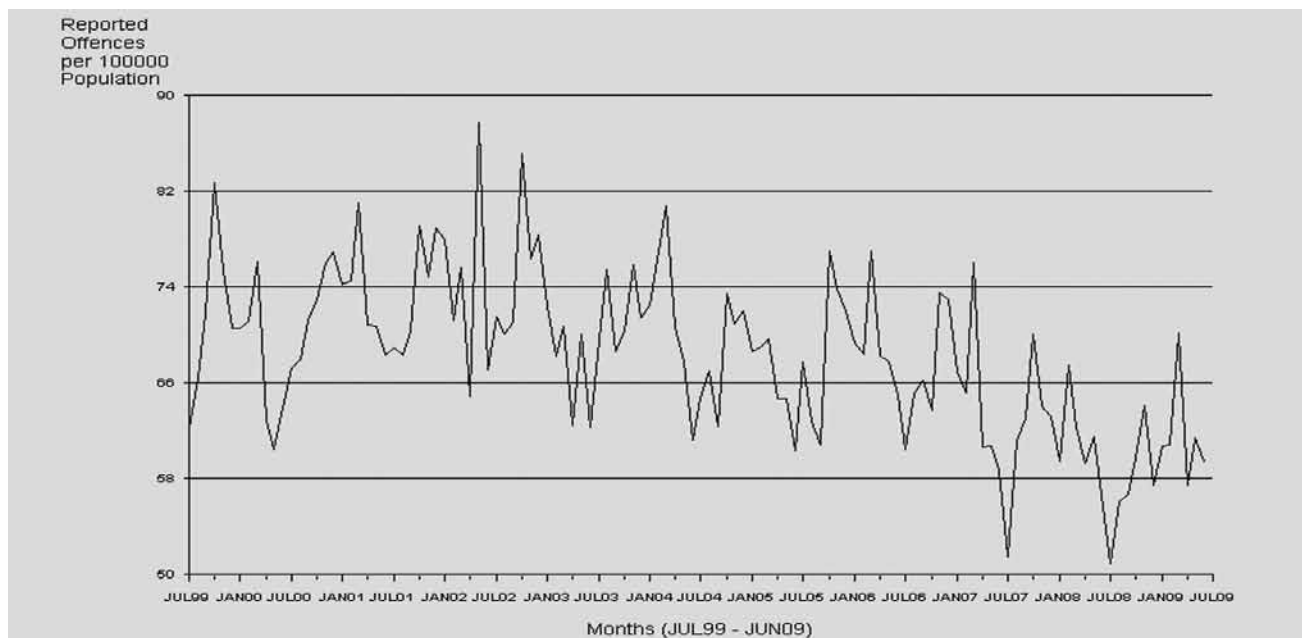
Australian Demographic Statistics, December Quarter 2008 (3101.0), Australian Bureau of Statistics were used to calculate the rates up to June, 2009.

To test for a statistically significant trend in the following graphs, Kendall's rank order correlation test (Conover, W.J. 1971 Practical Non-Parametric Statistics,

2nd edition, John Wiley and Sons, pages 256-260) was used. Although the 5% level of significance was used, most results were significant at the 1% level. Details are footnoted where appropriate in the text under each graph. This test is a two-tailed test which determines whether there is an increasing or decreasing trend in the recorded number of offences over the one hundred and twenty month period covered in the report.

Some month to month variations in the numbers of recorded offences suggested seasonal factors may be operating. The test for trend is not sensitive to seasonal variations; it is sensitive only to a generally increasing or decreasing trend over the time period examined.

Offences Against the Person



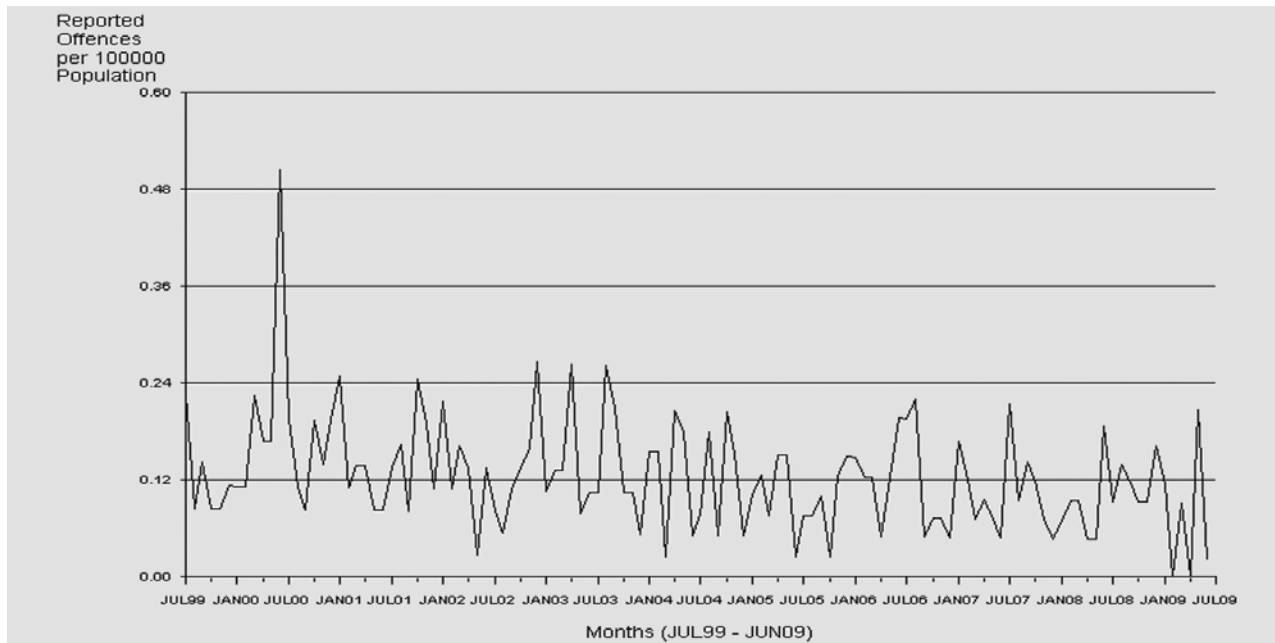
Total Offences Against the Person has a statistically significant* decreasing trend over the ten year period. This broad offence group tends to be dominated by Assaults as is evidenced by the strong seasonal influence recorded by the time series.

During the last financial year, Offences Against the Person peaked in March due to the higher number of Assaults, Sexual Offences and Other Offences Against the Person reported in the month.

* The result is significant at the 1% level of confidence, using Kendall's rank order correlation test. See page 17 for further information.

Monthly Crime Trends

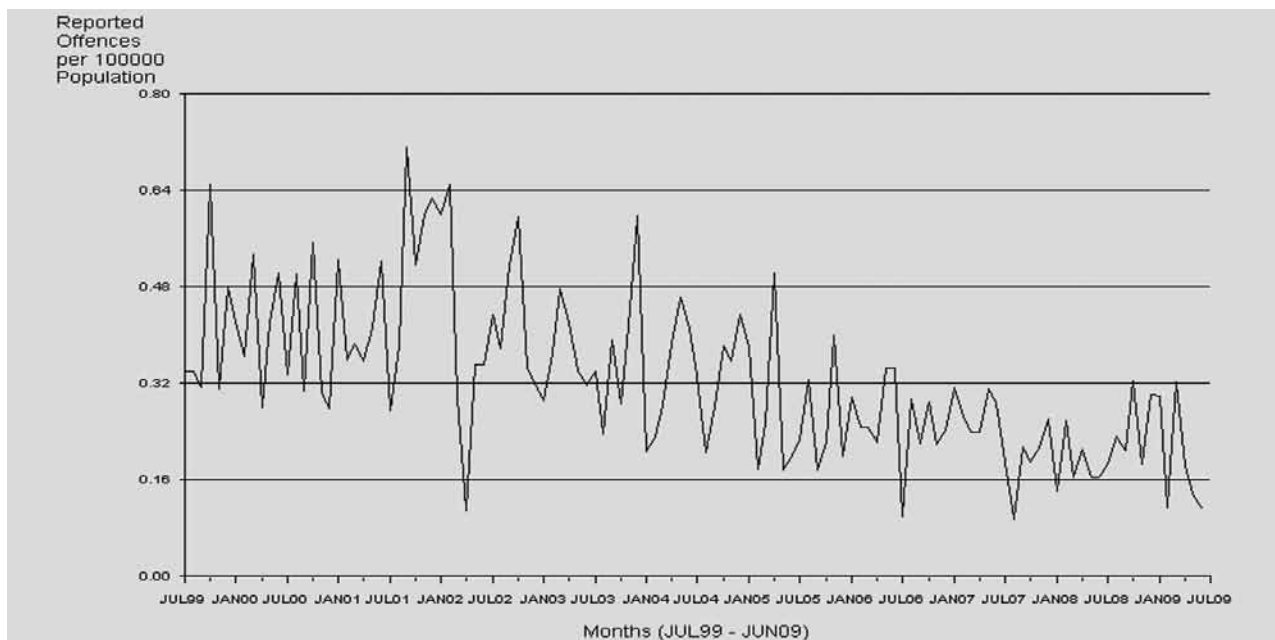
Homicide (Murder)



Over the ten year period there is a significantly decreasing trend* in the Homicide (Murder) time series. This small volume offence is subject to marked fluctuations from one month to the next.

The spike in the time series occurred in June 2000 and was the result of the Childers Backpacker fire in which there were fifteen victims. There were 49 reported murders in 2008/09 for Queensland which is three less than the previous year.

Other Homicide



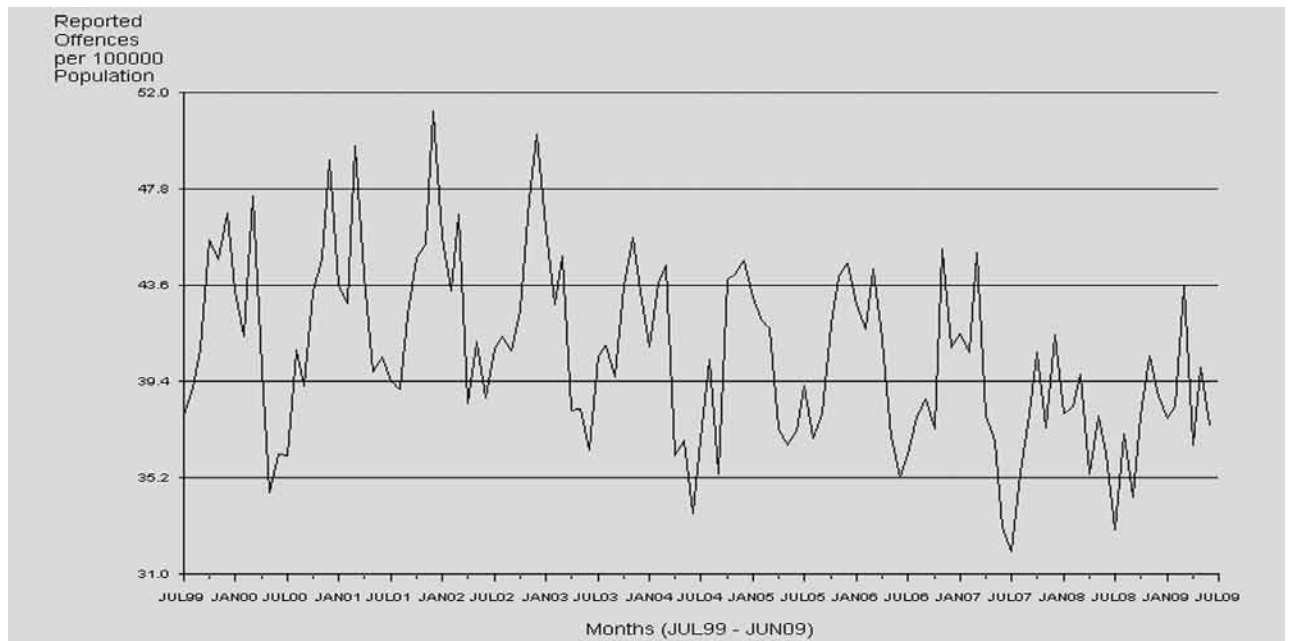
As with Homicide (Murder), Other Homicide is a low volume offence category and, as such, is subject to random fluctuations from month to month. Over the ten year period, there is a significantly decreasing

trend* for the Other Homicide time series. Although an increase of 15% was reported in the 2008/09 financial year, a decreasing trend is displayed in the Other Homicide time series.

* The result is significant at the 1% level of confidence, using Kendall's rank order correlation test. See page 17 for further information.

Monthly Crime Trends

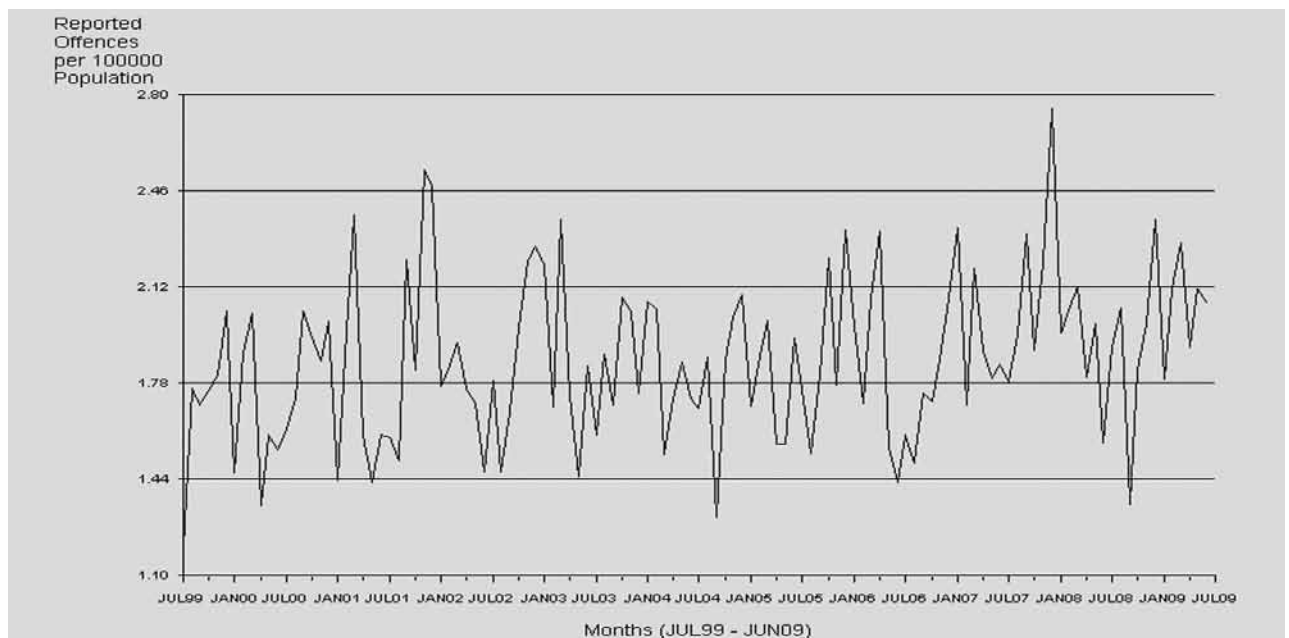
Assault



Assault is the largest in volume of the Offences Against the Person categories. There was a statistically significant decreasing trend* detected for the 2008/09 period. Assault offences are subject to strong seasonal influences,

which are evident in the time series, with a higher rate of offences occurring over the summer months and a lower number of offences occurring in the winter.

Grievous Assault



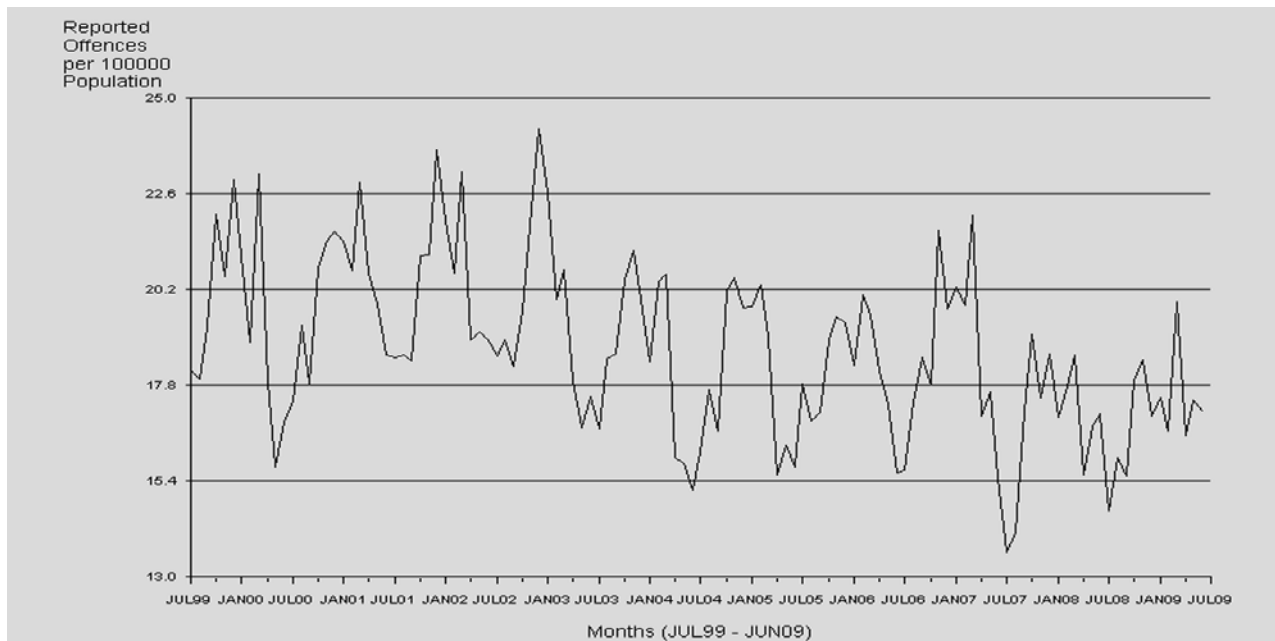
Grievous Assault is a small volume offence and, as such, will be subject to marked fluctuations over time. Overall, the rate of Grievous Assaults has increased* slightly.

The seasonal influence is obvious in the time series with the peaks occurring in the summer months.

* The result is significant at the 1% level of confidence, using Kendall's rank order correlation test. See page 17 for further information.

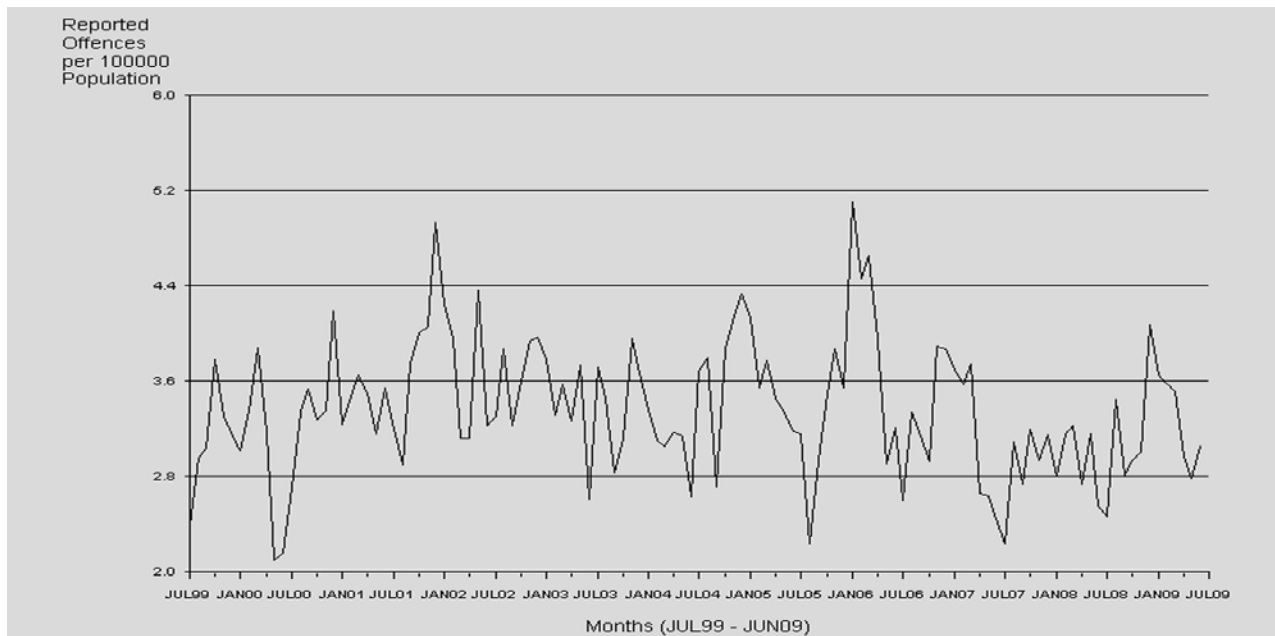
Monthly Crime Trends

Serious Assault



Again, the strong seasonal influences are evident in this time series, with a higher rate of offences occurring over the summer months and a lower rate of offences occurring in the winter months of each year. A significantly decreasing trend was detected over the ten year period*.

Serious Assault (Other)

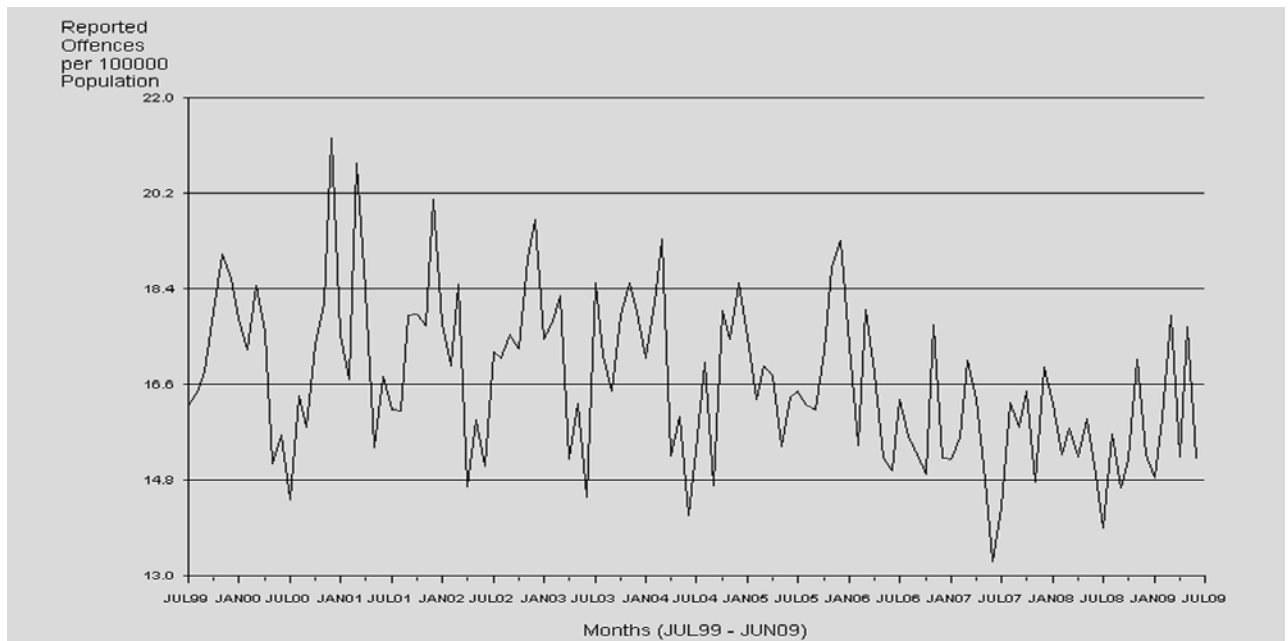


Serious Assault (Other) has no statistically significant increasing or decreasing trend* over the ten year period. Although less apparent than for the other sub-categories of Assault, the peaks and troughs reflect the strong seasonal influence exerted on the time series with the higher rates occurring in the summer months.

* The result is significant at the 1% level of confidence, using Kendall's rank order correlation test. See page 17 for further information.

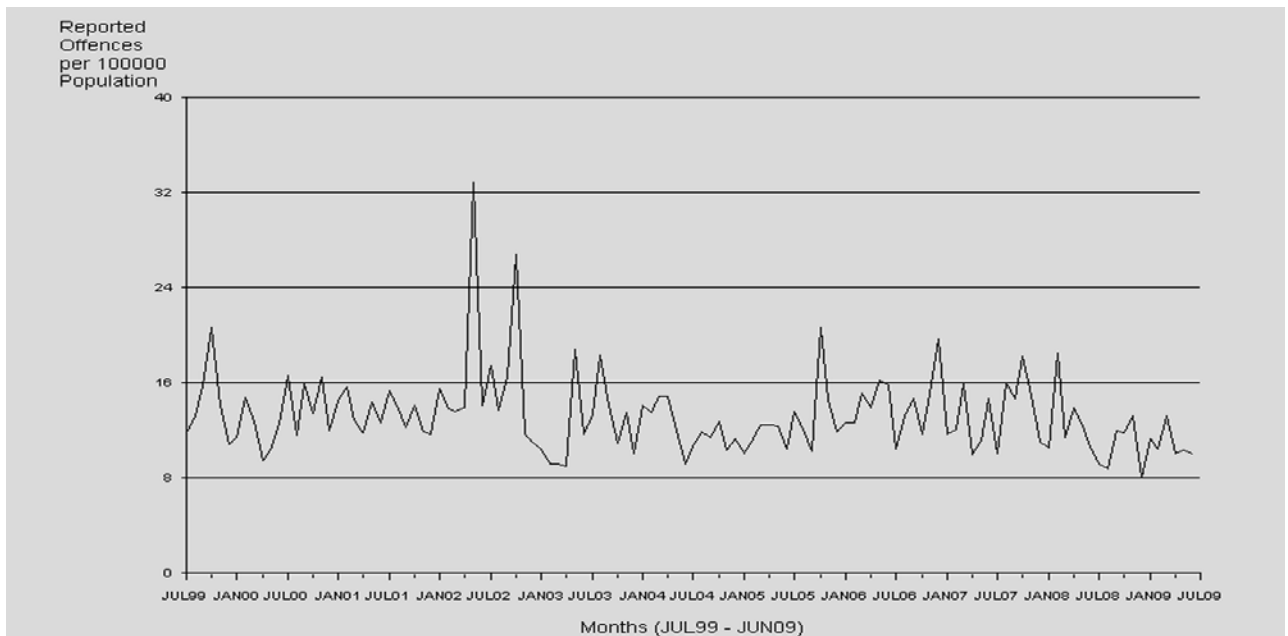
Monthly Crime Trends

Common Assault



The stability in the trend of Common Assault offences continues into 2008/09. There is a statistically significant decreasing trend*. As with all sub-categories of Assault, the seasonal influence is apparent in the graph above.

Sexual Offences

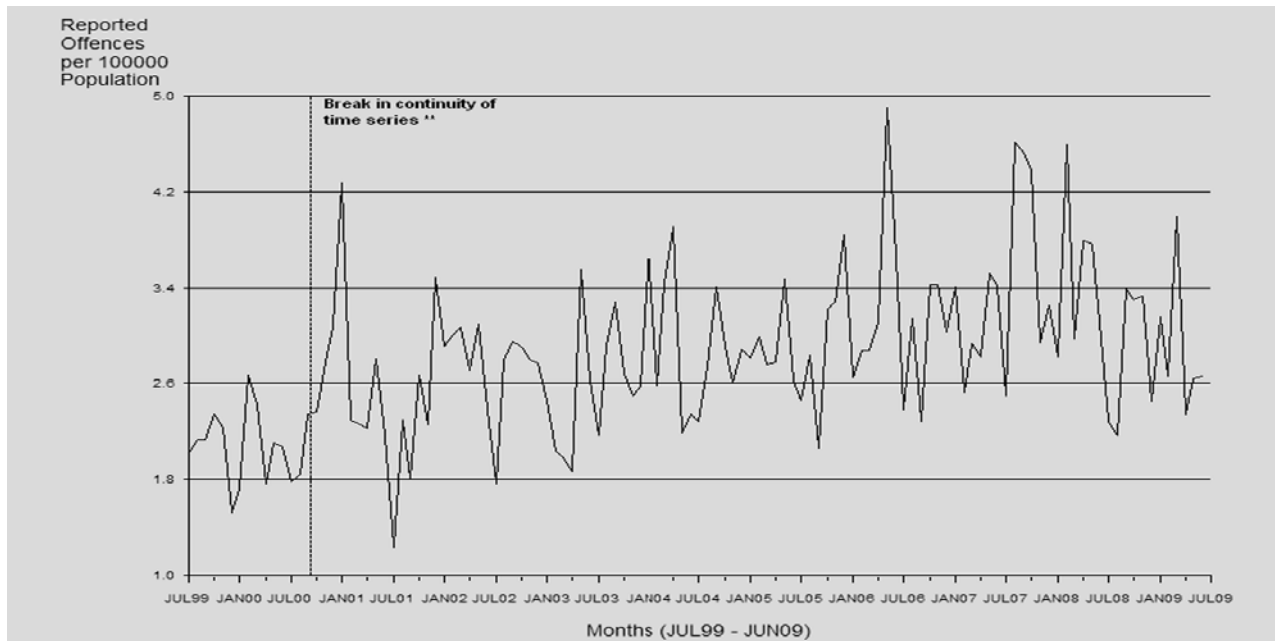


The spikes in the Sexual Offences time series are the result of large numbers of offences being reported to police. All are due to single offenders who were responsible for multiple offences for incidents occurring over a number of years. Overall, this time series records no significant trend*.

* The result is significant at the 1% level of confidence, using Kendall's rank order correlation test. See page 17 for further information.

Monthly Crime Trends

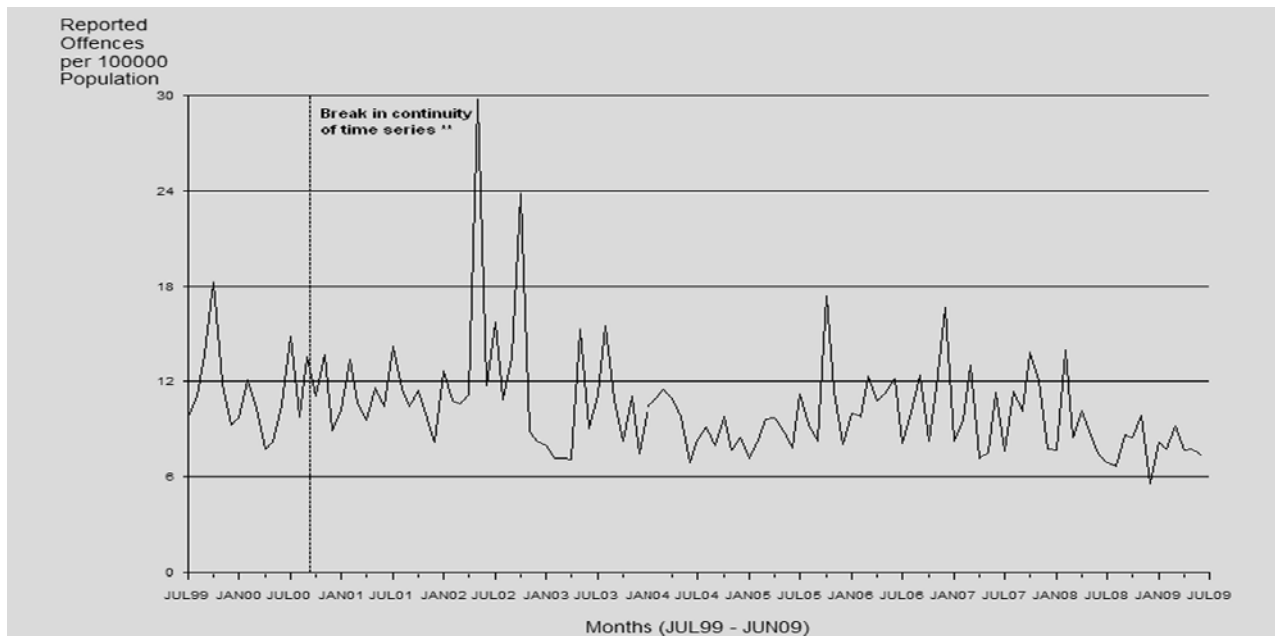
Rape and Attempted Rape



The break in continuity of the Rape and Attempted Rape time series involved a broadening of the definition of rape (Criminal Law Amendment Act, 1997; changes to the Criminal Code, 2000)**. As such, care should be exercised when comparing

data prior to and following these changes as is recorded by the marked increase in offences following the break in continuity. These increases have resulted in a statistically significant upward trend* detected overall.

Other Sexual Offences



Single offenders were charged with in excess of 660 and 400 Other Sexual Offences for incidents which occurred over a period of time. The charges were preferred in May and October 2002 respectively resulting in the third and fourth large spikes

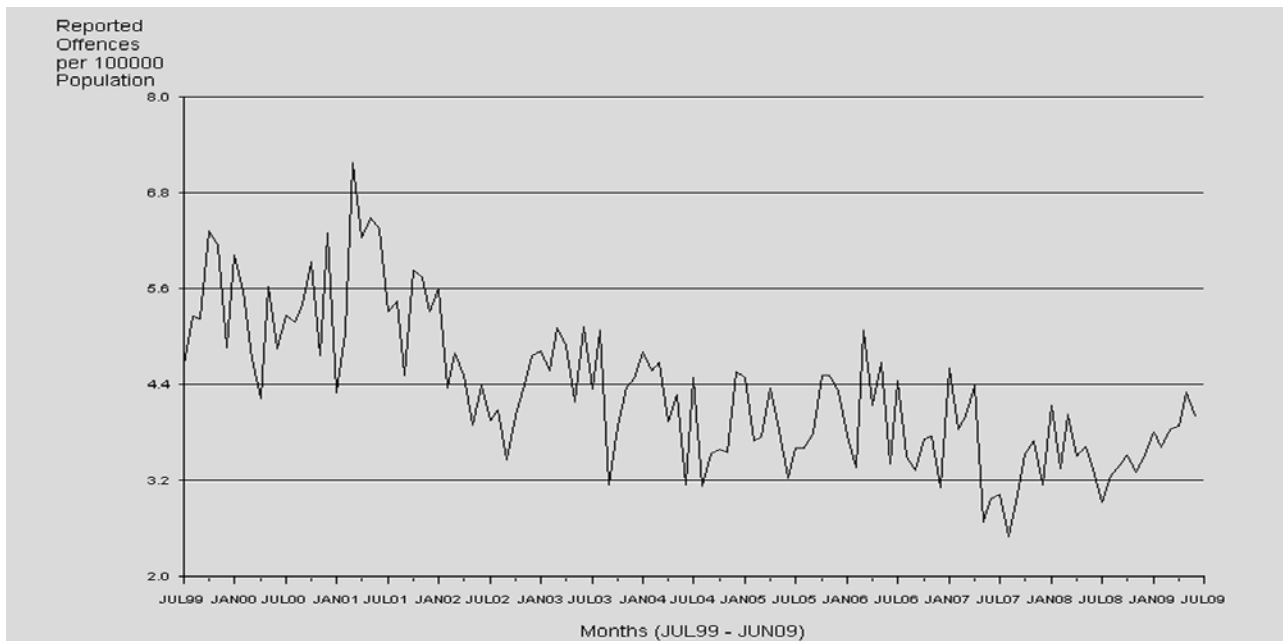
in the time series. Two reports relating to historical offences with large counts were responsible for the spike in December 2006.

** The introduction of the Criminal Law Amendment Act, 1997 resulted in a broadening of the definition of Rape and Attempted Rape and the narrowing of Other Sexual Offences; further changes to the Criminal Code (October, 2000) resulted in an even broader definition of Rape and Attempted Rape and a subsequent narrowing of Other Sexual Offences.

* The result is significant at the 1% level of confidence, using Kendall's rank order correlation test. See page 17 for further information.

Monthly Crime Trends

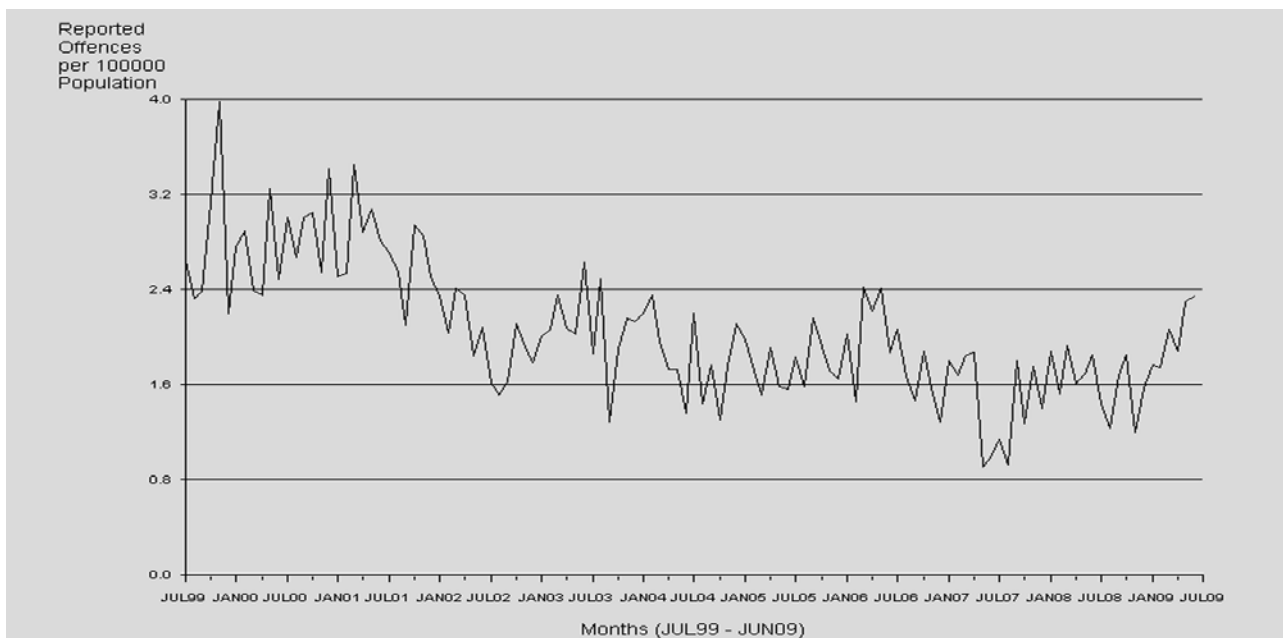
Robbery



Rates of Robbery offences decreased noticeably from July 1999 to mid 2000 and then again from early 2001 to 2002. Since 2003, rates of Robbery offences continued to decrease

until June 2008. Although 2008/09 has reported an increase in Robbery offences the time series overall, recorded a significantly* downward trend.

Armed Robbery



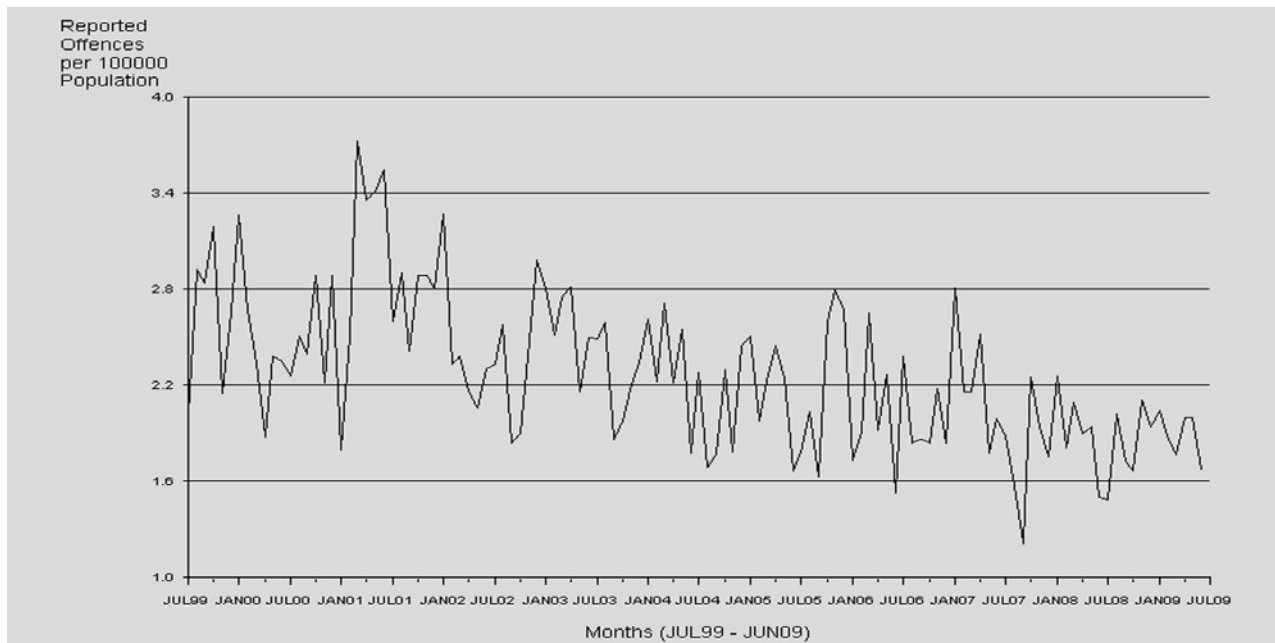
Although the overall trend in the rate of Armed Robbery has been decreasing significantly* since 1999/00, the time series did record an increase in 2005/06 (11%). Following a 1% decrease

last year, Armed Robbery increased by 12% in the current period under review.

* The result is significant at the 1% level of confidence, using Kendall's rank order correlation test. See page 17 for further information.

Monthly Crime Trends

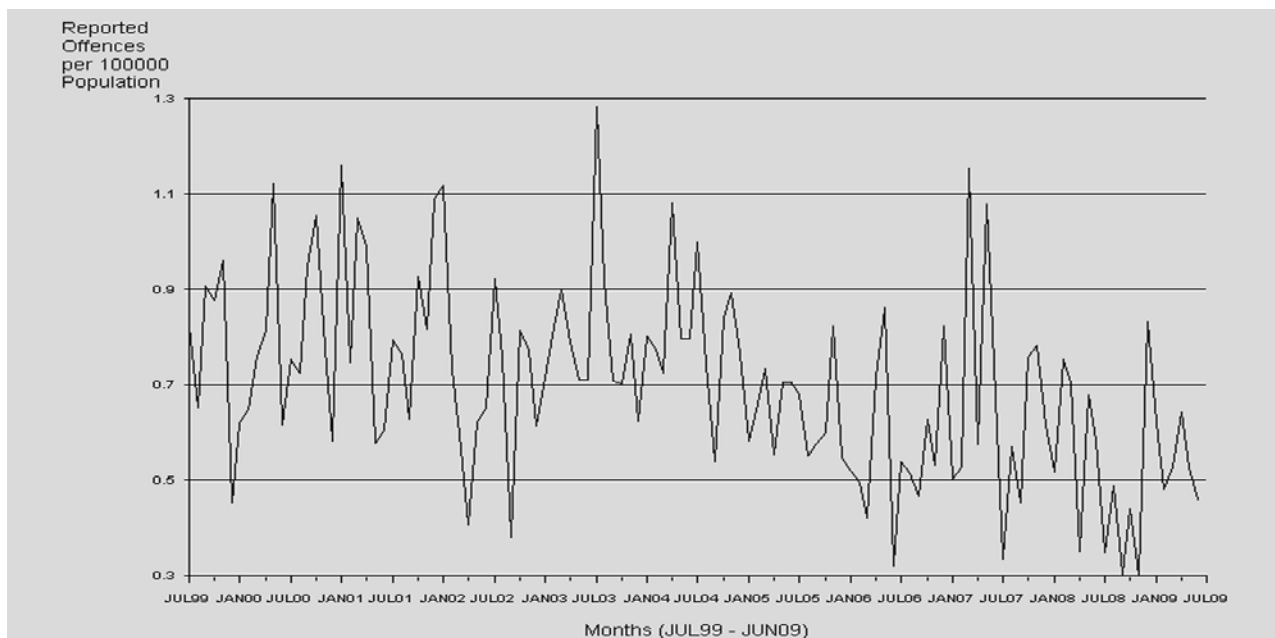
Unarmed Robbery



Rates of Unarmed Robbery have recorded fluctuations over time. Since recording a peak in 2000/01 the rate of Unarmed Robbery has continued to record an overall downward trend*.

During the current period, Unarmed Robbery recorded an increase of 1%.

Kidnapping, Abduction, etc.



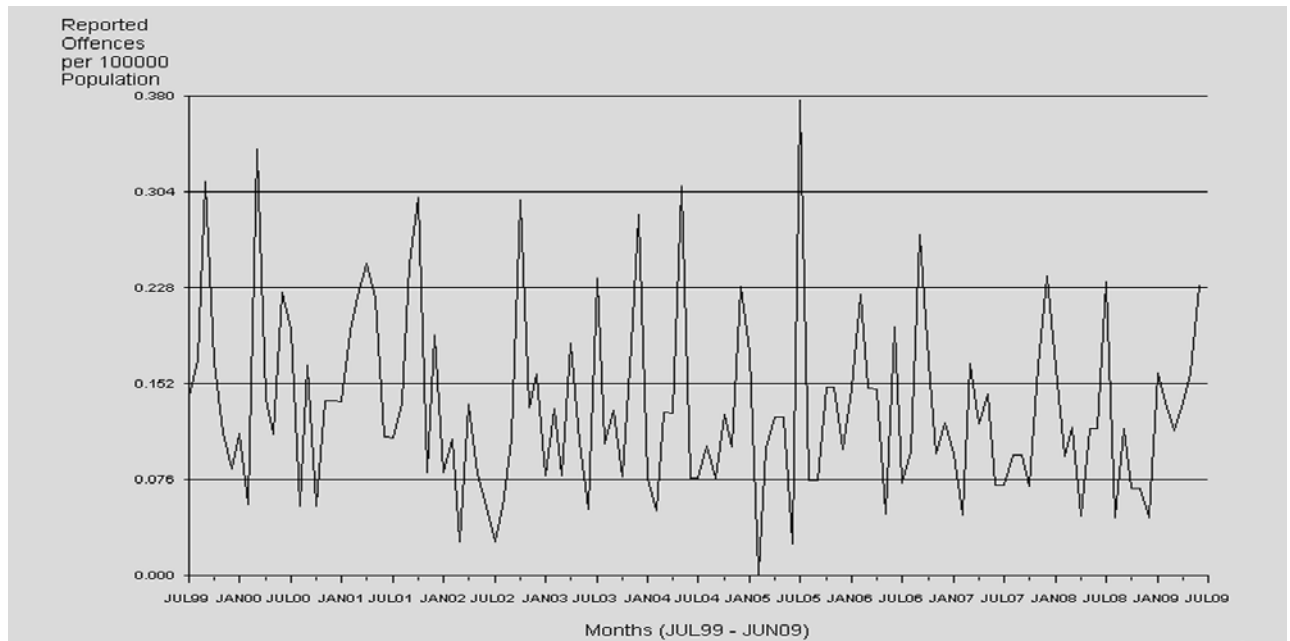
This time series is subject to the fluctuations that occur in small volume offence categories. The rates of Kidnapping and Abduction etc. offences have been steadily decreasing over the

ten year period of the time series and records a statistically significant decreasing trend*.

* The result is significant at the 1% level of confidence, using Kendall's rank order correlation test. See page 17 for further information.

Monthly Crime Trends

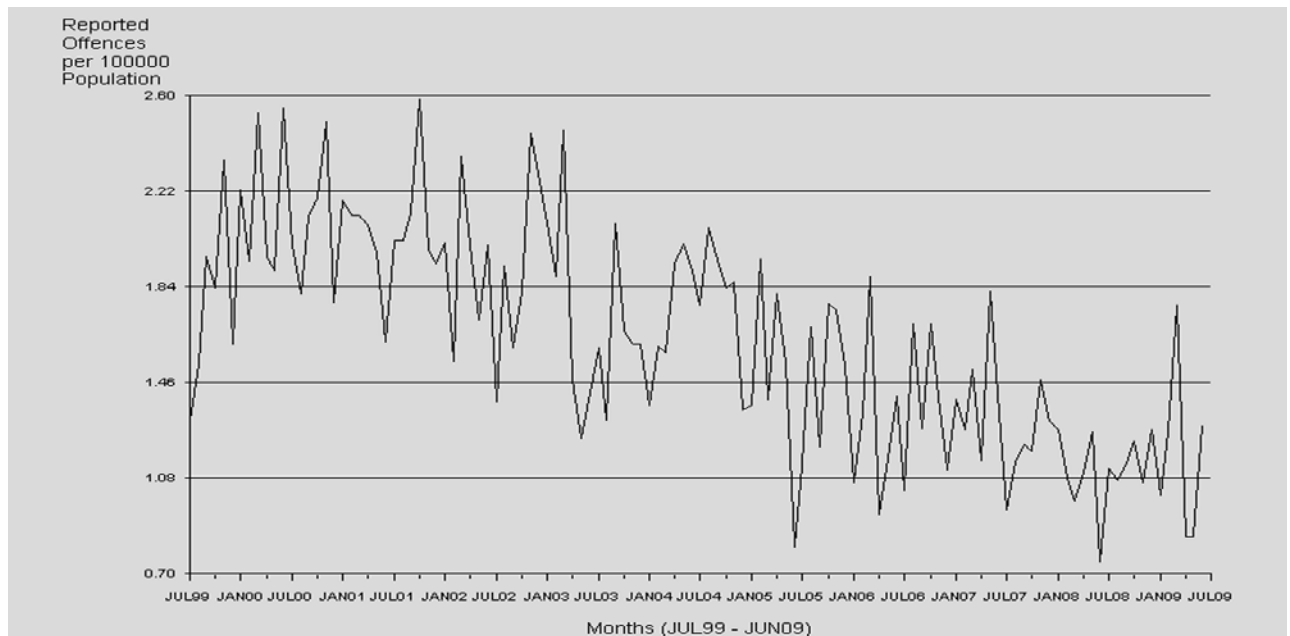
Extortion



Extortion is the lowest in volume of the Offences Against the Person categories and, as such, is prone to random variations from month to month. Overall, no statistically significant

increasing or decreasing* trend was detected over the ten year period. During the current period, the State recorded an increase of 9%.

Stalking



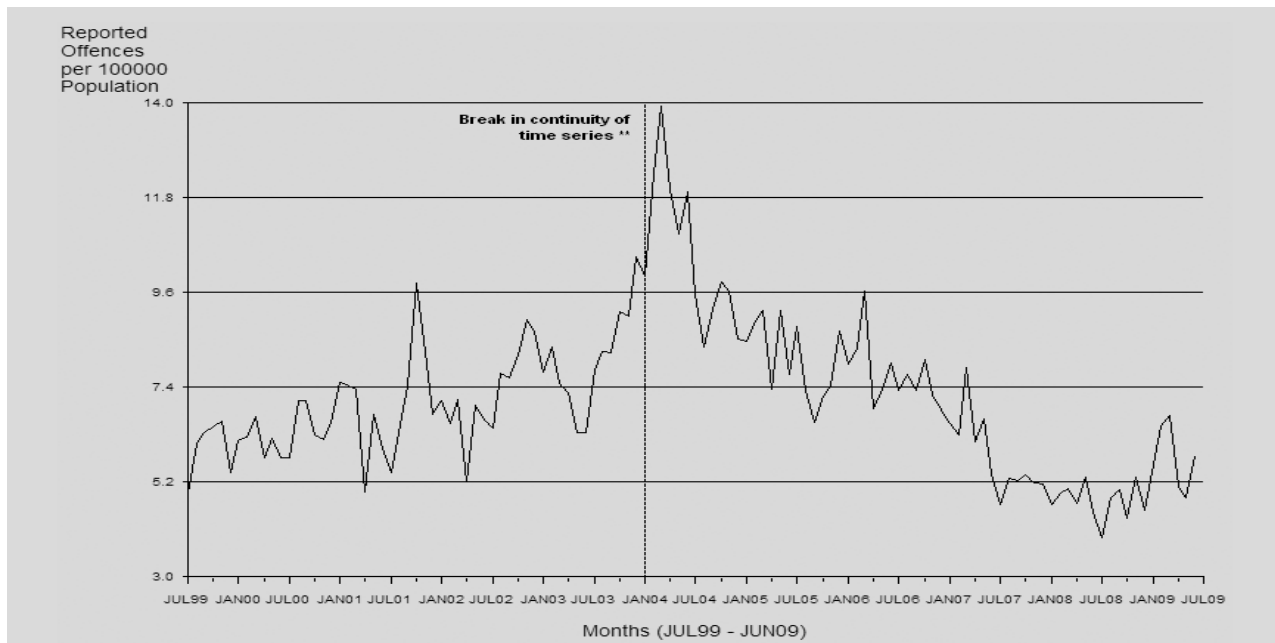
As can be seen in the graph above, the time series displays a statistically significant decreasing trend* over the ten year

period. The State recorded a 1% increase in Stalking offences during the 2008/09 financial year.

* The result is significant at the 1% level of confidence, using Kendall's rank order correlation test. See page 17 for further information.

Monthly Crime Trends

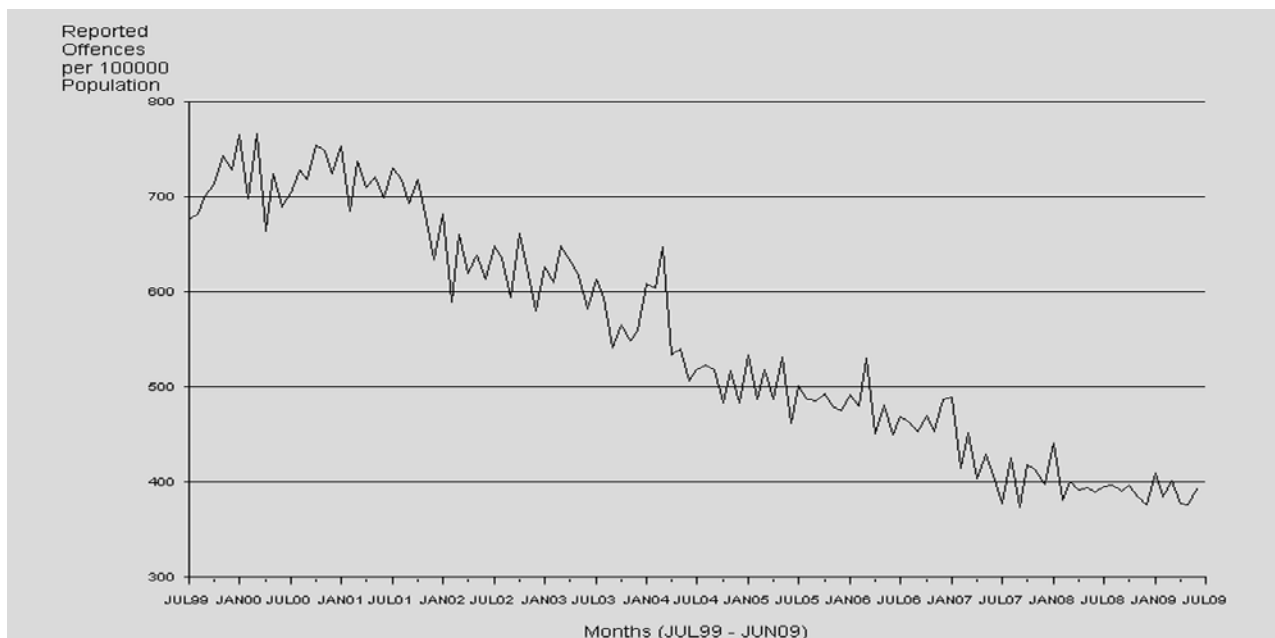
Life Endangering Acts



Due to a review conducted in January 2004 by the Crime and Misconduct Commission, the recording of child abuse cases has undergone changes**. The rates of Life Endangering

Acts offences have been steadily decreasing since April 2004 and records no statistically significant decreasing or increasing trend* over the ten year period.

Offences Against Property



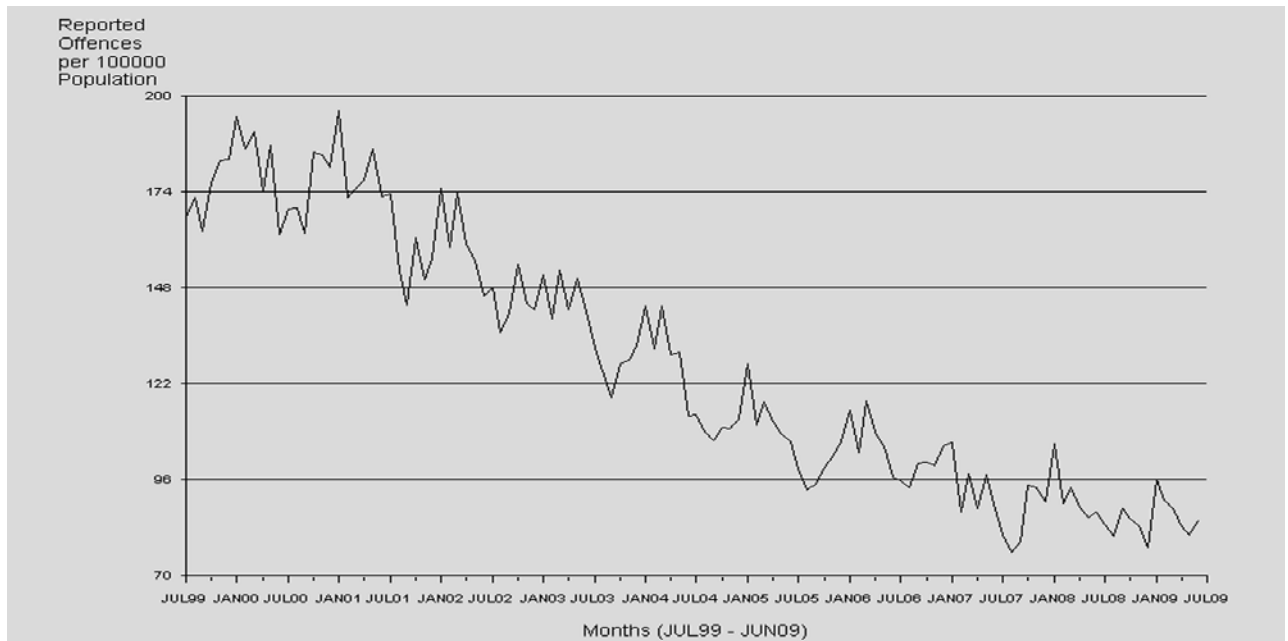
The Offences Against Property time series has historically been reasonably stable, though since January 2001, has a statistically significant downward trend* being detected. This is a large volume offence group and, as such, increases or decreases

are usually small in the overall context. The rate of Offences Against Property has decreased over the last eight years. In the current time period, Offences Against Property decreased by 2%

* The result is significant at the 1% level of confidence, using Kendall's rank order correlation test. See page 17 for further information.

Monthly Crime Trends

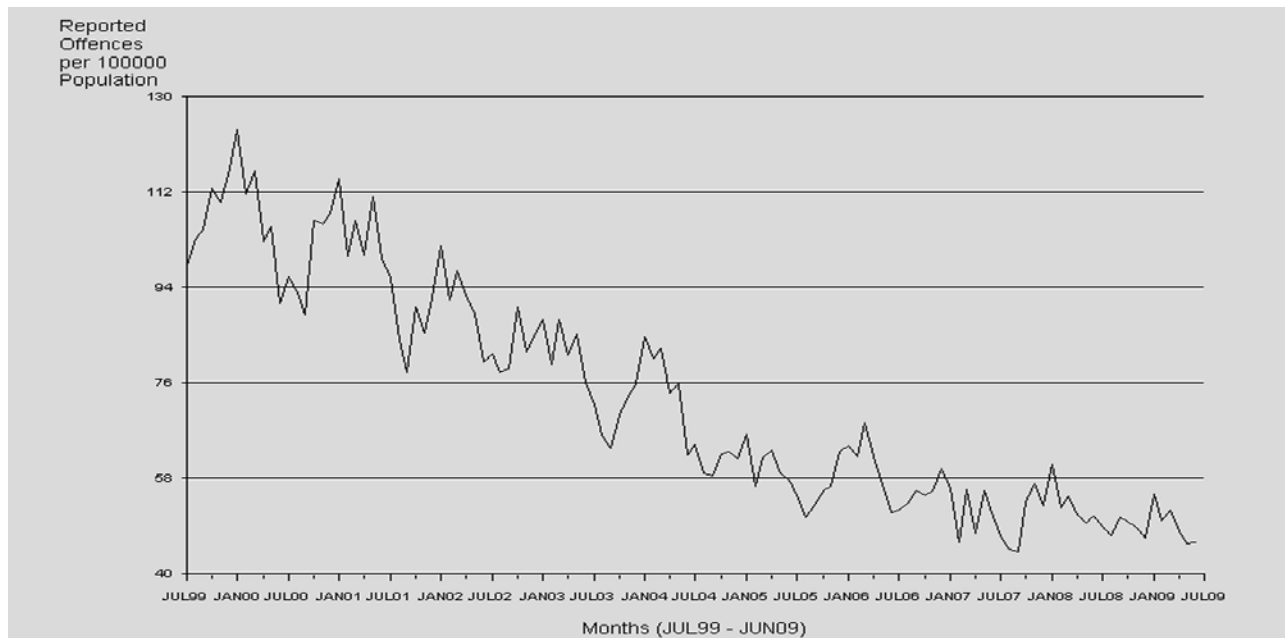
Unlawful Entry



Overall, there was a statistically significant decreasing trend detected* for Unlawful Entry. In the current period, the rate of

Unlawful Entry offences decreased by 4% following on from a decrease of 8% in the 2007/08 financial year.

Unlawful Entry - Dwellings



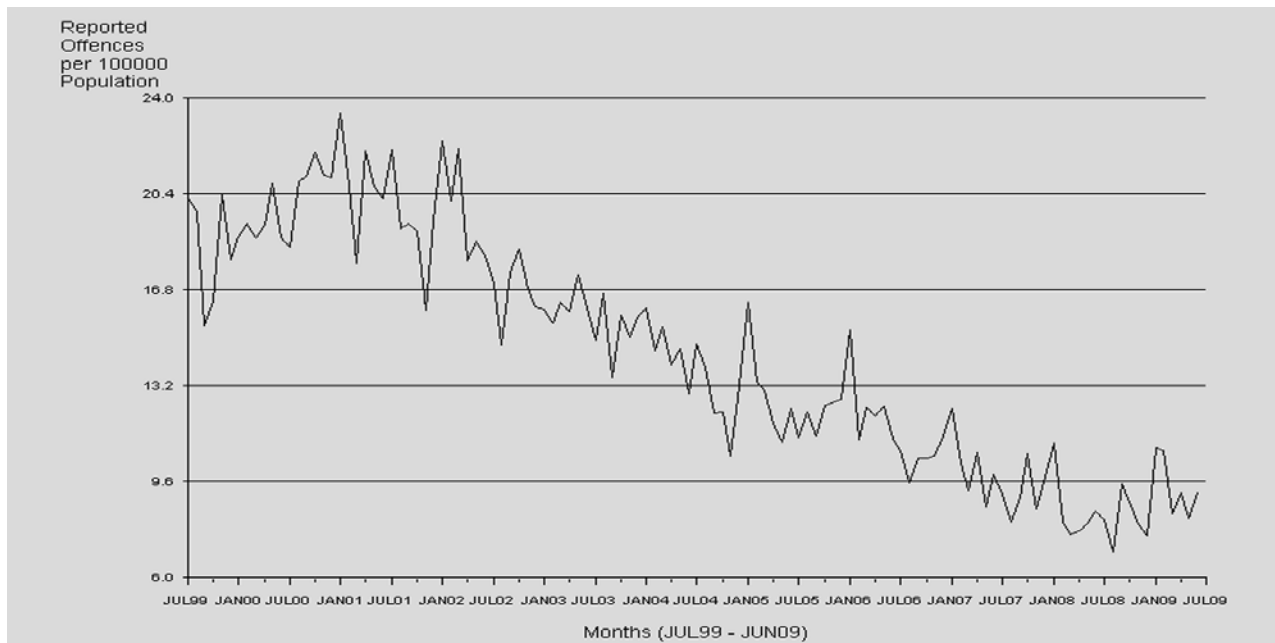
The rate of Unlawful Entry - Dwellings stabilised from 1999 to 2001. Since this time, the rate has been steadily decreasing to the extent that an overall statistically significant decreasing trend* was detected. The rate continued to decrease reflecting

a 5% reduction in the current review period. The fact that this offence is subject to seasonal variation is evidenced in the graph above.

* The result is significant at the 1% level of confidence, using Kendall's rank order correlation test. See page 17 for further information.

Monthly Crime Trends

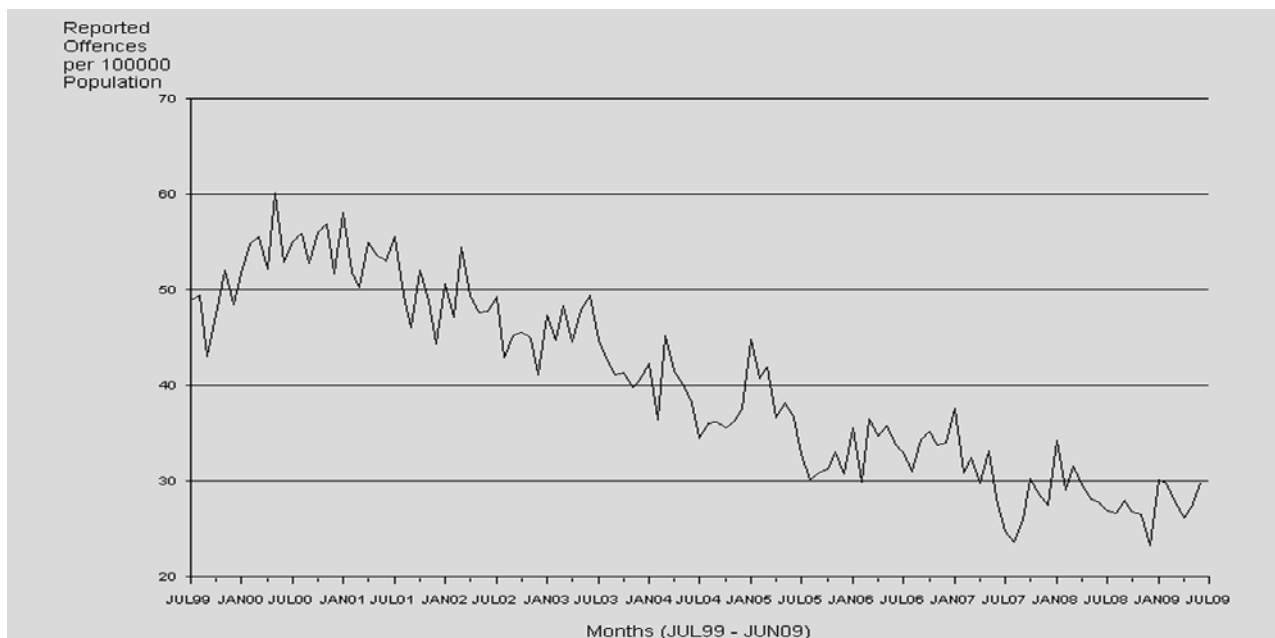
Unlawful Entry - Shops



Over the ten years, the rate of Unlawful Entry - Shops offences has been significantly decreasing*. Unlawful Entry - Shops

offences recorded no change for 2008/09 financial year. This follows a 15% decrease recorded in the previous year.

Unlawful Entry - Other Premises



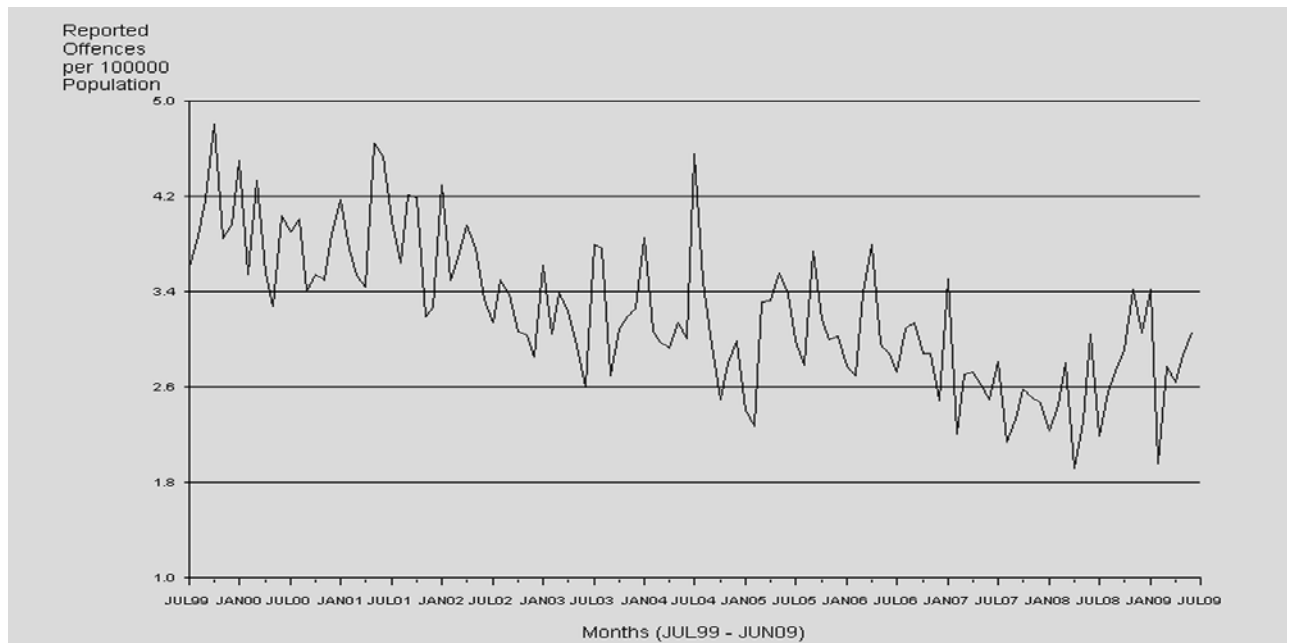
Overall, there was a significantly decreasing trend* detected for Unlawful Entry - Other Premises. Following a steady trend between 1999/00 and 2000/01, the time series is decreasing.

The reductions over the last eight financial years are apparent at the end of the time series.

* The result is significant at the 1% level of confidence, using Kendall's rank order correlation test. See page 17 for further information.

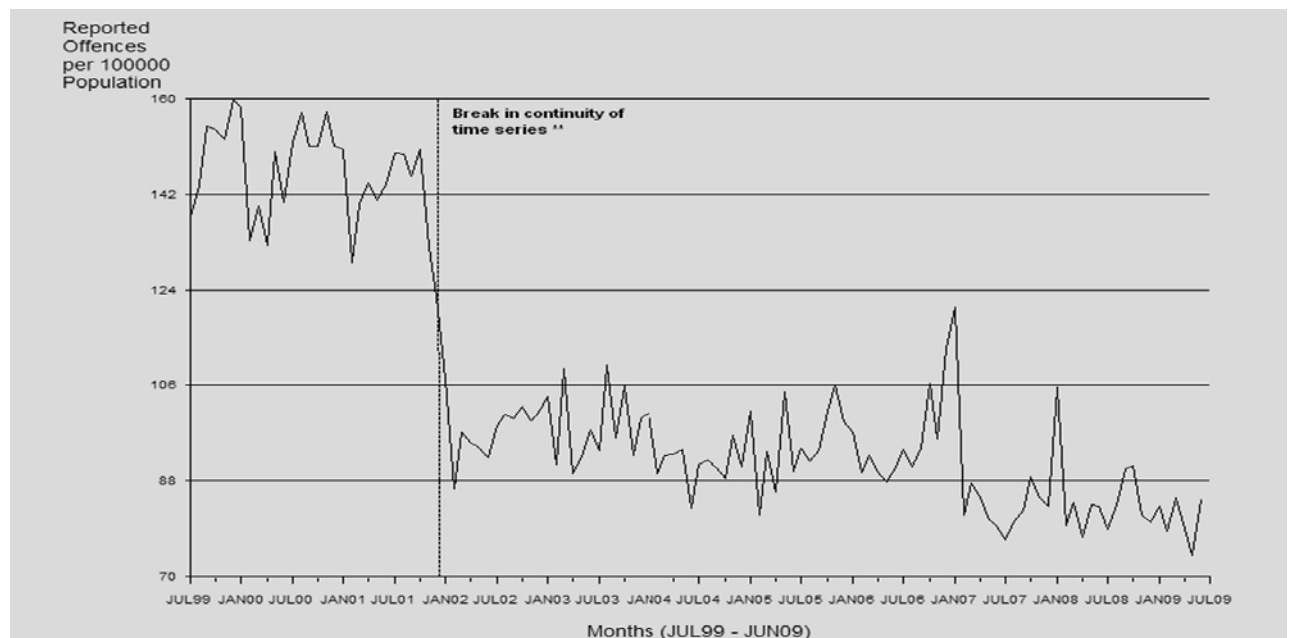
Monthly Crime Trends

Arson



Over the ten years of the time series, a statistically significant downward trend* was detected for Arson offences. For the year under review, the rate of Arson offences increased by 14% from 29 to 33 offences per 100,000 persons.

Other Property Damage



The sharp decrease in the first half of the time series is the result of a change in policy regarding the reporting of Other Property Damage offences. This break in continuity** effectively renders a statistical test invalid. While the change

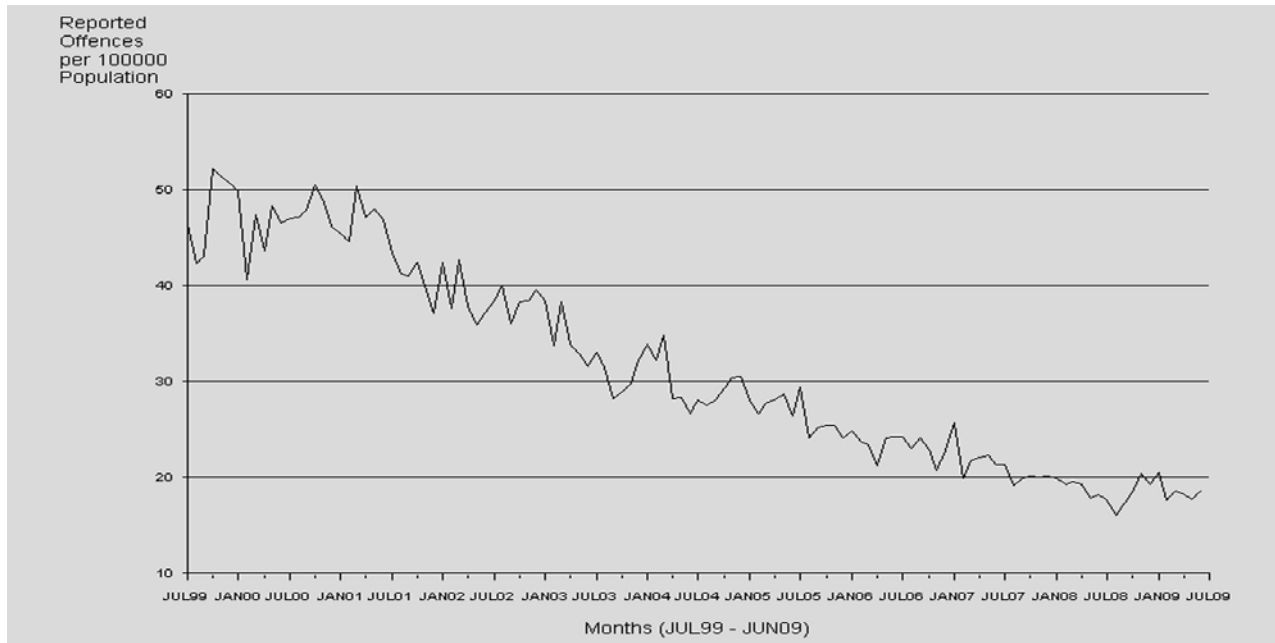
in policy contributed to a 20% decrease in the rate of offences in 2001/02, this downward trend continued for the next seven years.

** Change in policy regarding the recording of Property Damage offences in conjunction with Unlawful Entry and Unlawful Use of Motor Vehicles has resulted in a break of continuity and, thus, caution should be exercised when looking at offences over time (see Explanatory notes 150 for further information).

* The result is significant at the 1% level of confidence, using Kendall's rank order correlation test. See page 17 for further information.

Monthly Crime Trends

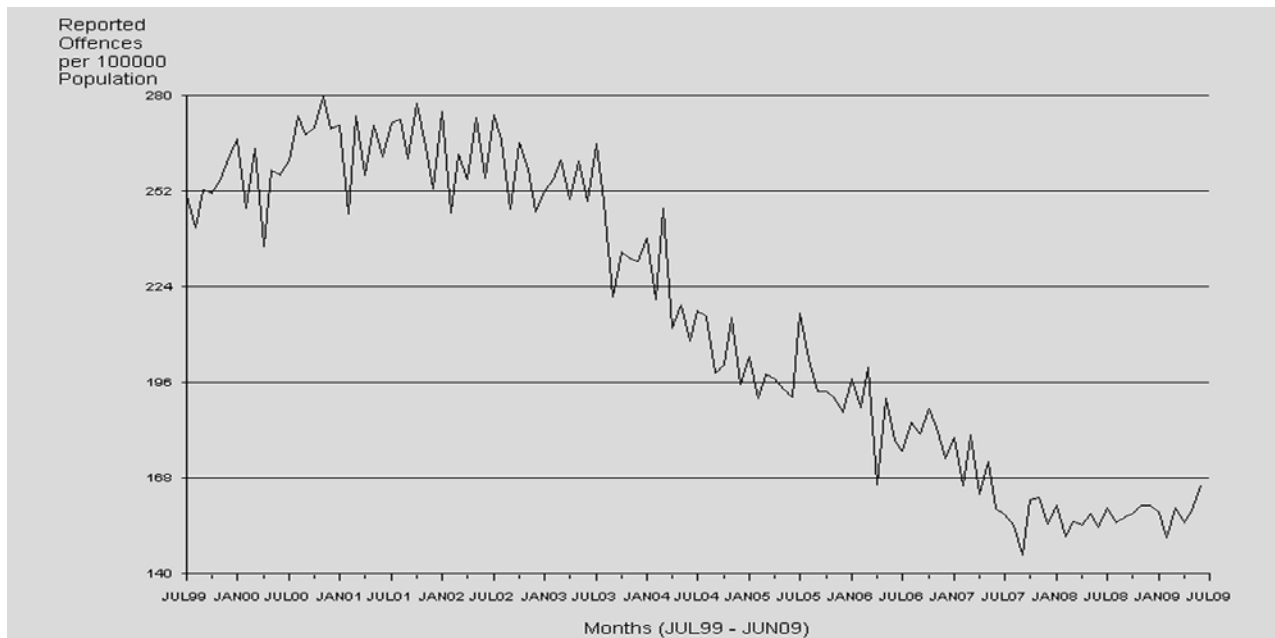
Unlawful Use of Motor Vehicle[^]



Overall, a statistically significant decreasing trend* was detected for the Unlawful Use of Motor Vehicle time series. As with other Offences Against Property, the substantive decreases recorded in the rate of Unlawful Use of Motor Vehicle offences over the

last seven eight years is apparent at the end of the time series. Following a sizeable decrease in 2007/08 of 13%, the rate of offences fell a further 6% in the current period.

Other Theft (excluding Unlawful Entry)



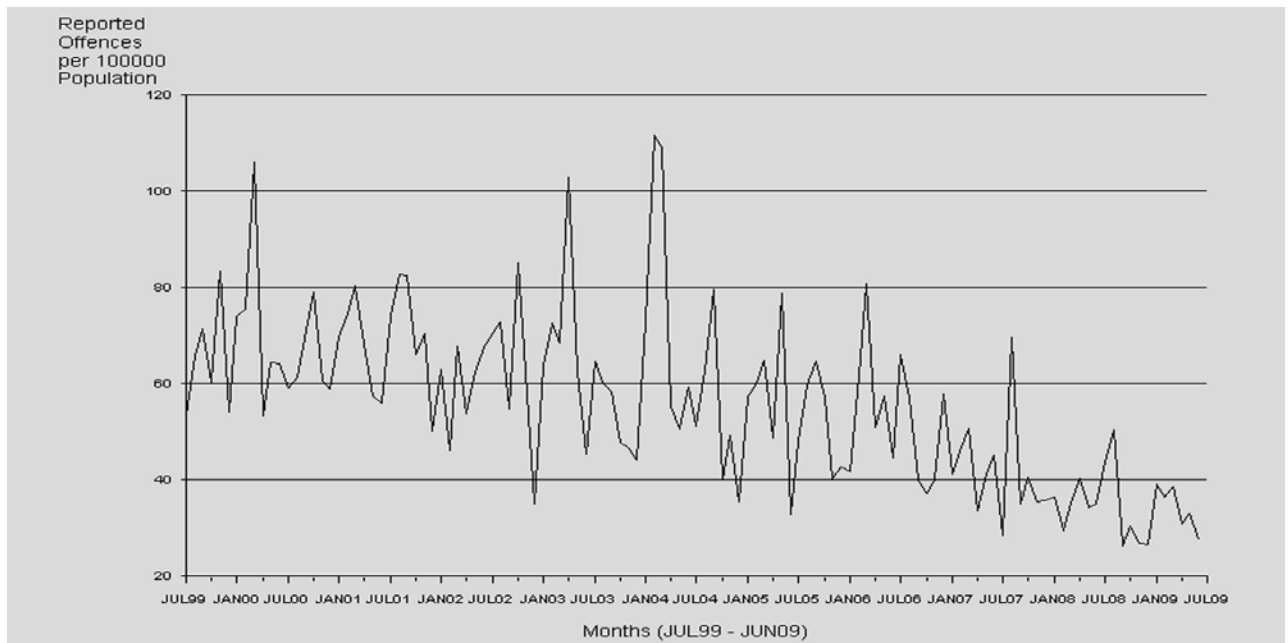
A statistically decreasing trend* was detected for the Other Theft (excluding Unlawful Entry) category. A decrease in offences can be seen since July 2003. However, the current

period recorded a 2% increase following an 11% decrease recorded during the previous period.

[^] Includes attempted offences.
 * The result is significant at the 1% level of confidence, using Kendall's rank order correlation test. See page 17 for further information.

Monthly Crime Trends

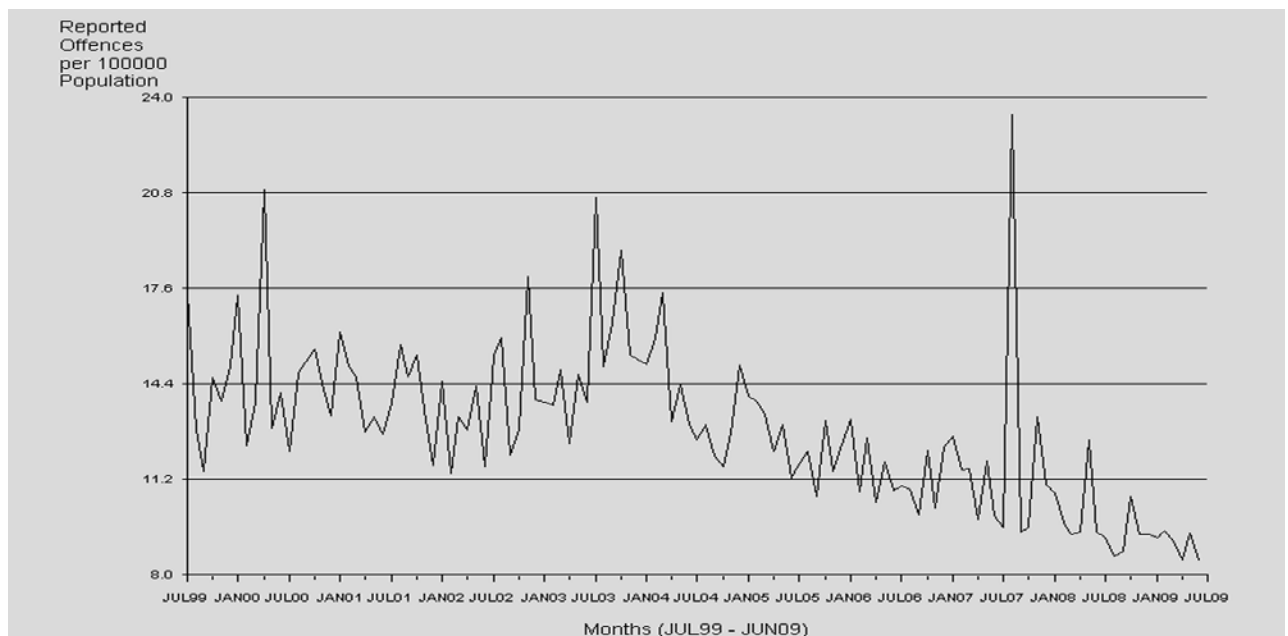
Fraud



There is a statistically significant downward trend* in Fraud offences as evident in the graph above. Four of the five sub-categories of Fraud recorded decreases attributing to the 10%

decrease in overall Fraud offences in the current reporting period.

Handling Stolen Goods



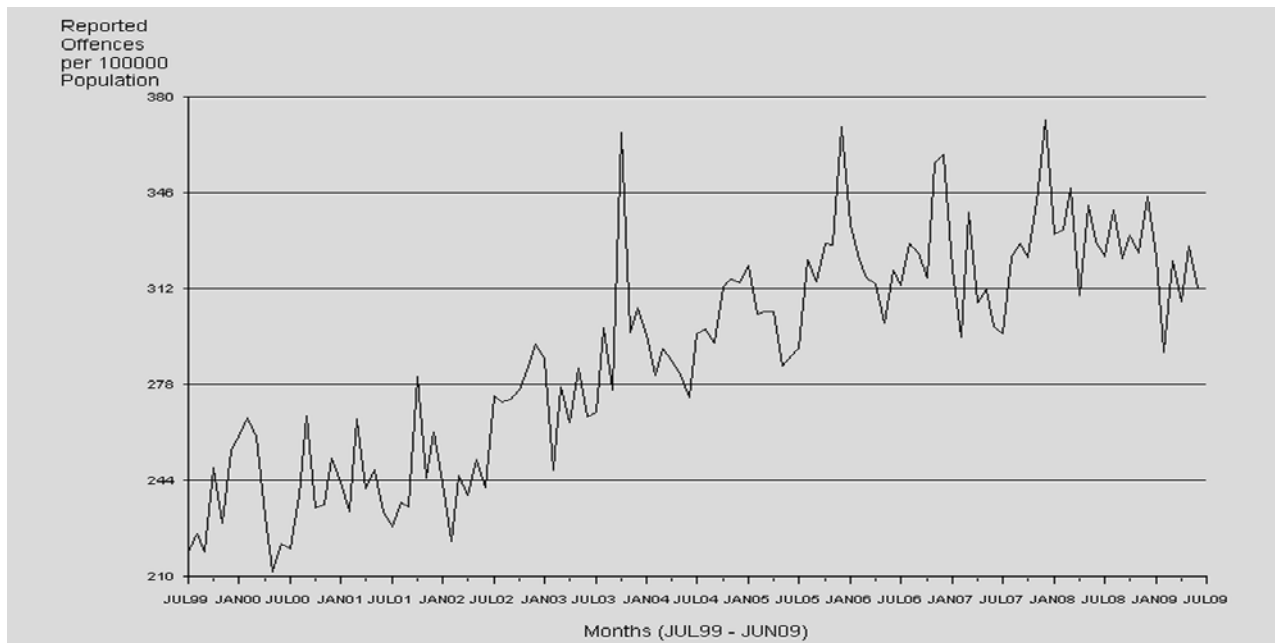
A statistically significant decreasing trend* is evident in the Handling Stolen Goods time series. Over the last 12 months, the rate of offences decreased by 20% after having increased by 3% during 2007/08. The first spike in the time series is the result of approximately 270 offences laid against two offenders

in April, 2000. One offender was responsible for the spike in July 2003 being charged with 171 offences. The spike in 2007/08 period was the result of 470 offences preferred against two offenders during August 2007.

* The result is significant at the 1% level of confidence, using Kendall's rank order correlation test. See page 17 for further information.

Monthly Crime Trends

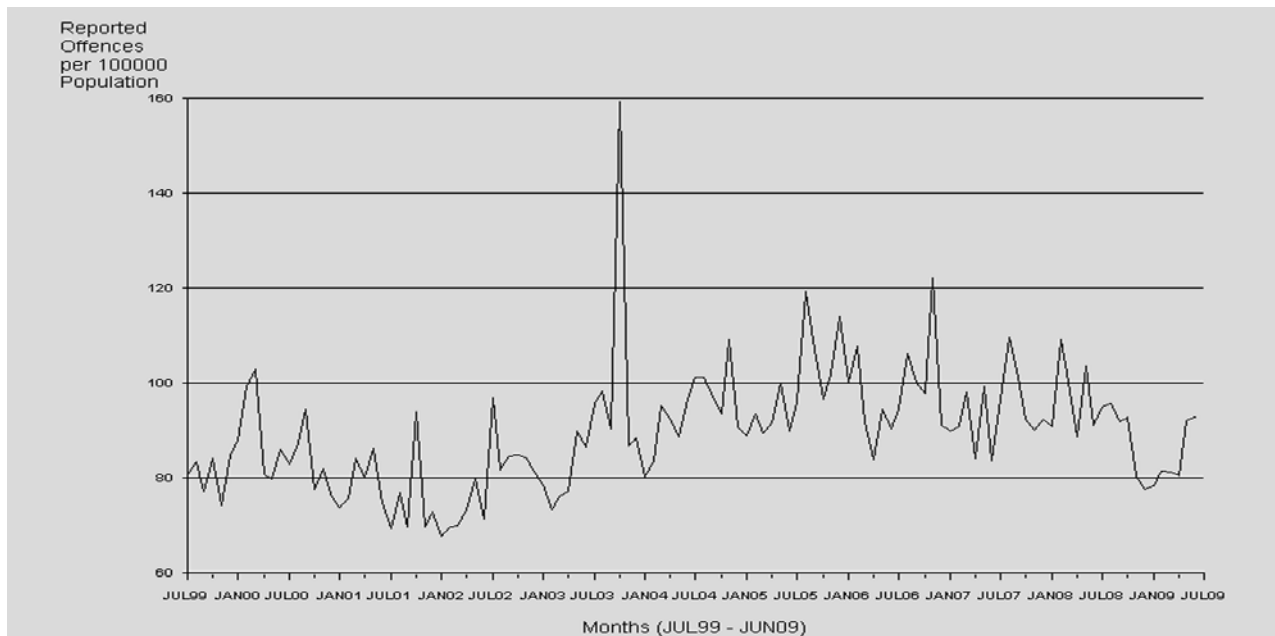
Other Offences



Other Offences are generally detected by police rather than reported to police. As such, any rise in Other Offences is usually regarded as a positive result. As is evidenced in the

graph above, a statistically significant upward trend* was detected. The State recorded a 3% decrease in the period under review.

Drug Offences



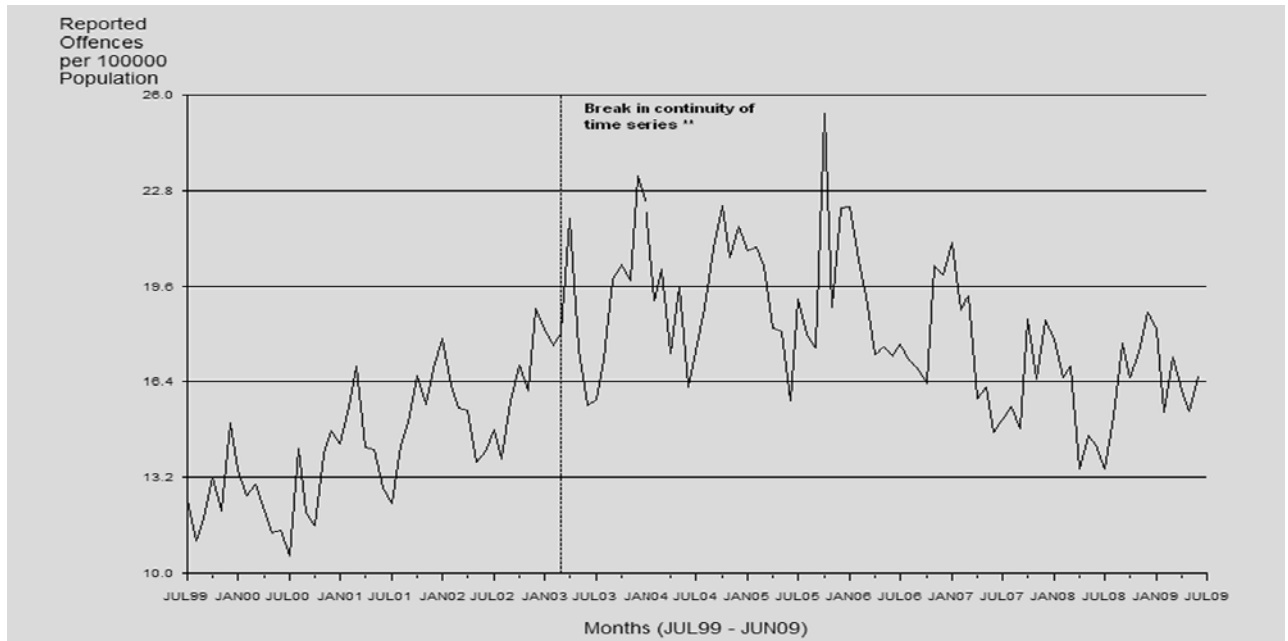
A statistically significant increasing trend* was detected for this time series over the ten year period. Following a slight decrease in the rate of Drug Offences from early 2000 to end 2001, rates again increased in 2003/04. The spike in the

middle of the time series was the result of over 2100 offences laid against a single offender in October 2003. The State recorded a decrease of 11% in the current period.

* The result is significant at the 1% level of confidence, using Kendall's rank order correlation test. See page 17 for further information.

Monthly Crime Trends

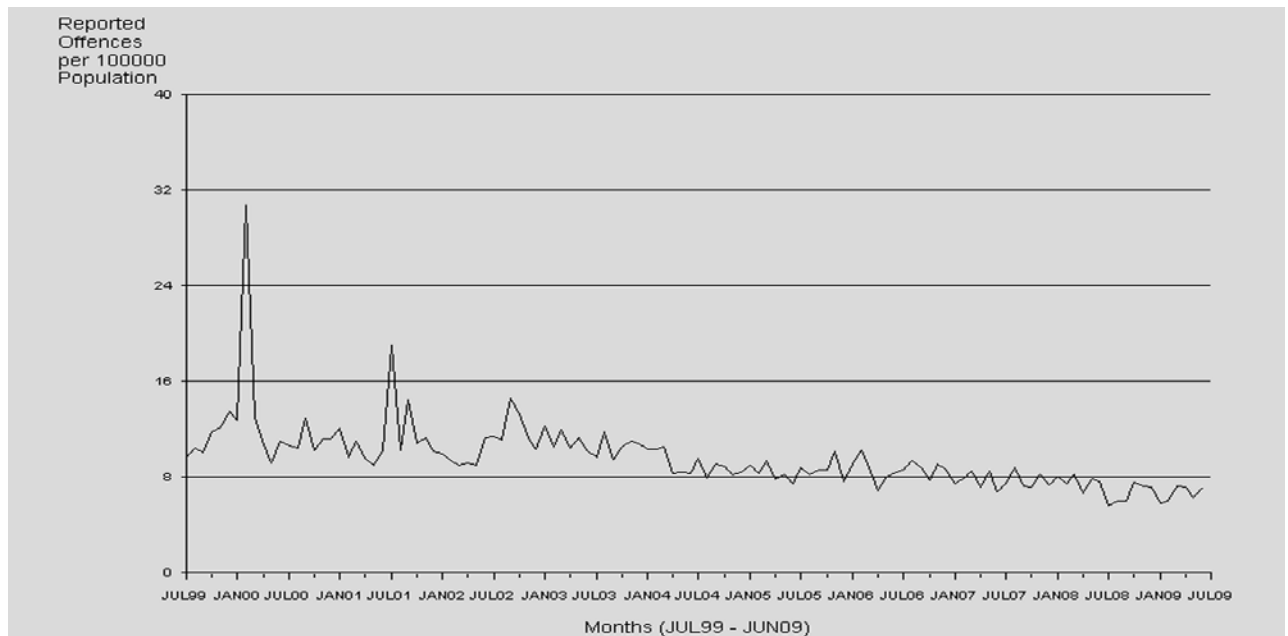
Breach of Domestic Violence Protection Orders



The legislative change in March 2003** caused a break in the continuity of this time series. Since this amendment, the time-series has stabilised. The spike recorded in October 2005 was the result of nearly 226 offences committed by one offender

and reported to police in this month. Breach of Domestic Violence Protection Orders are subject to strong seasonal influences, as is evidenced in the graph above.

Weapons Act Offences



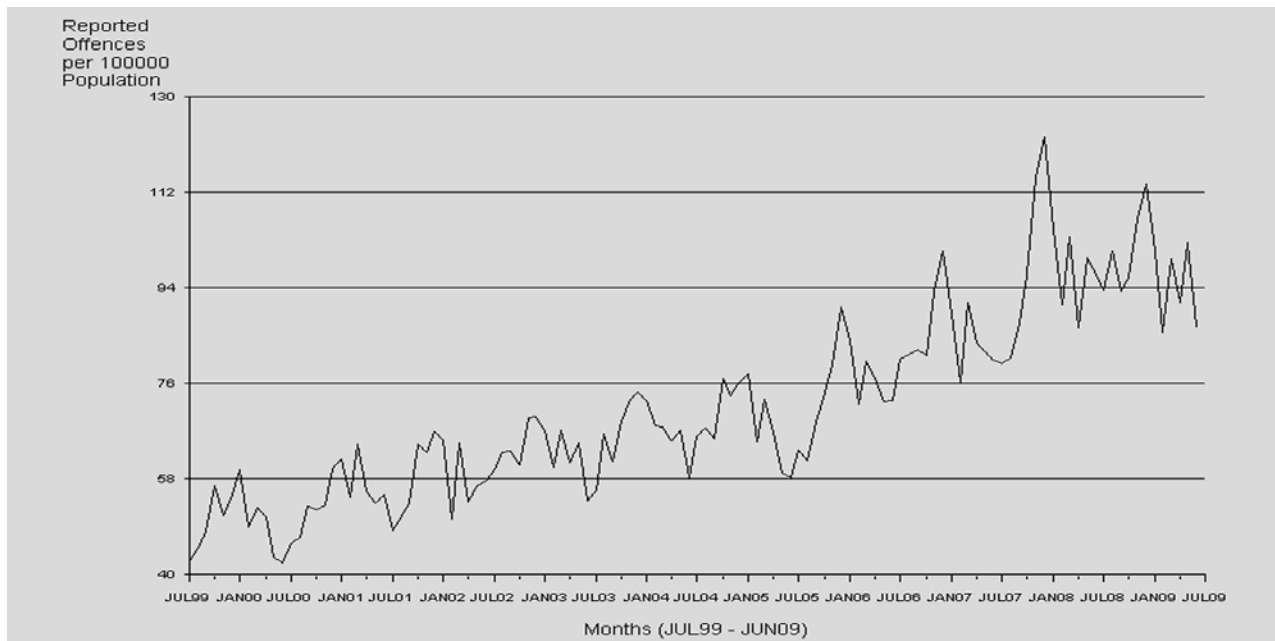
One offender was charged with 650 Weapons Act Offences in February 2000 resulting in a significant spike in the time series. Despite this spike, the time series records a significantly

decreasing trend*. Since January 2003, the time series has been decreasing. The rate of Weapons Act offences decreased by 14% in the current period under review.

** The Domestic and Family Violence Protection Act 1989 was expanded in March 2003 to include intimate personal, familial and informal care relationships.
 * The result is significant at the 1% level of confidence, using Kendall's rank order correlation test. See page 17 for further information.

Monthly Crime Trends

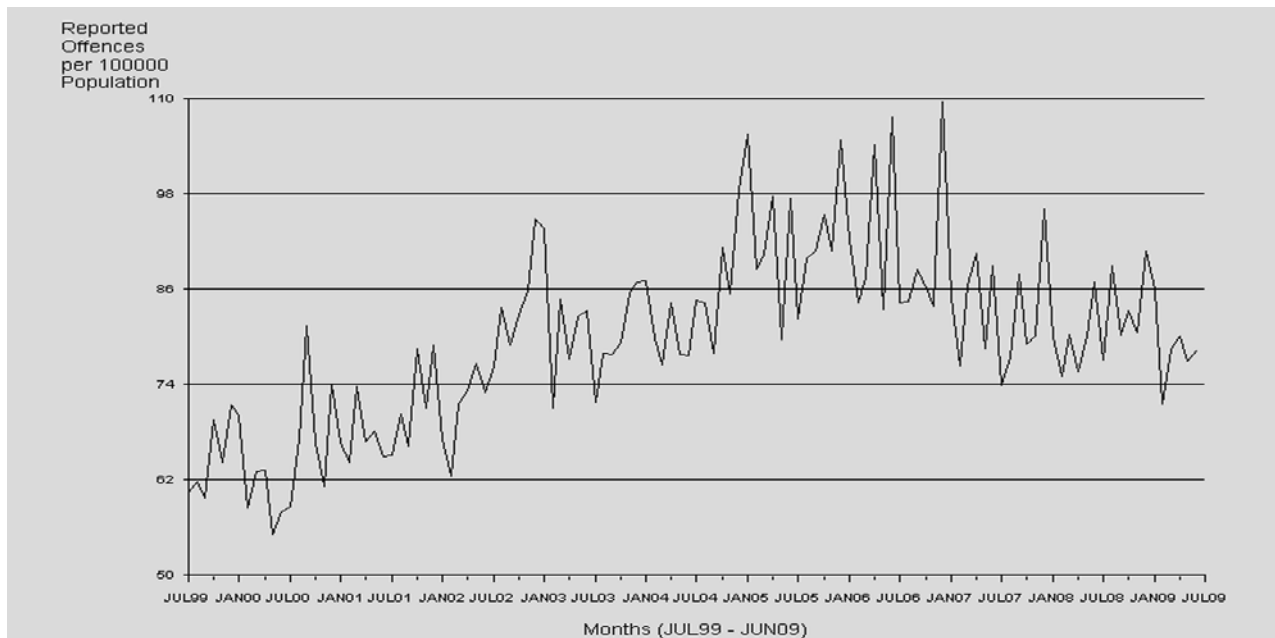
Good Order Offences



While the time series for Good Order Offences records a statistically significant upward trend*, a strong seasonal influence can also be seen. Offences tend to peak in the summer months and fall to a low during the winter months

of each year. Following an increase of 14% during 2007/08, Good Order Offences increased again by a further 1% in the current period.

Traffic and Related Offences



Overall, a statistically significant increasing trend* was detected in the time series. Following decreases in 2006/07 and 2007/08

of 6% and 7% respectively, 2008/09 recorded no change.

* The result is significant at the 1% level of confidence, using Kendall's rank order correlation test. See page 17 for further information.