

Annual Crime Trends

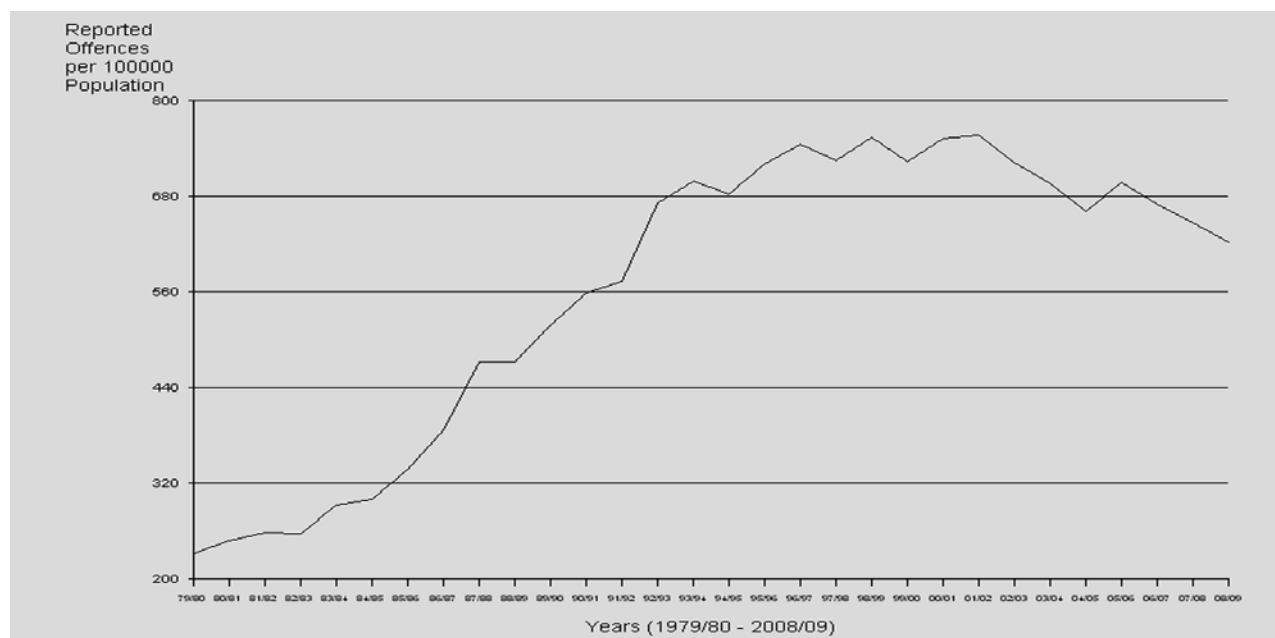
In this section, an examination of the number of selected offences per 100,000 population is provided for a thirty year period. The rates provided in this section are based on Estimated Residential Populations, or projections thereof, at 30 June each year, provided by the Australian Bureau of Statistics and the Office of Economic and Statistical Research, Queensland.

Since 1979/80, many legislative changes have occurred, and the classification, recording and reporting systems used by the Queensland Police Service have evolved. Therefore, some offence categories, for which thirty years of comparable statistics are not available, have not been included.

The offence categories which have been included in this section are those that have a reasonable degree of consistency and comparability for the past thirty years. Some of these categories (such as Unlawful Entry and Drink Driving) have undergone considerable change at certain times. These breaks in continuity have been noted in the accompanying text where appropriate.

Prior to 1991/92, all crime statistics produced by the Queensland Police Service were based on the date the information related to the crime was received at the Information Bureau (and its precursors) in Police Headquarters. Since 1991/92, the reference date has been the date the offence is reported to police.

*Offences Against the Person**



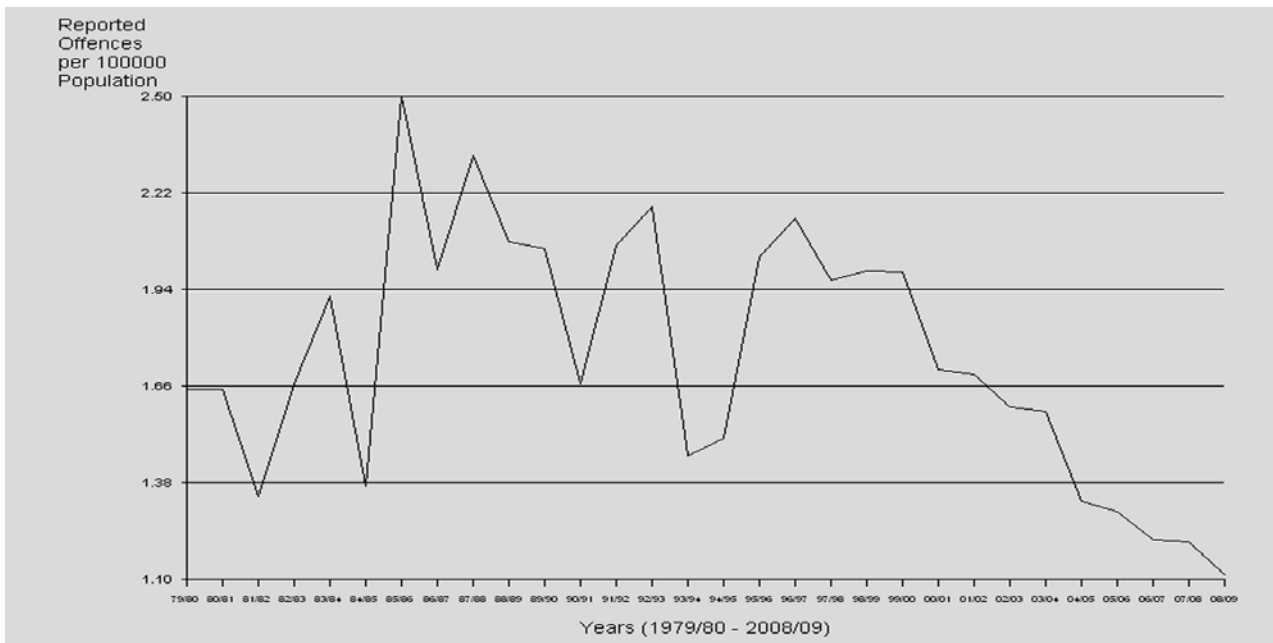
While this broad offence aggregate is comprised of a number of different offence categories, the offence category of Assault tends to dominate Offences Against the Person. As such, the Offences Against the Person time series largely reflects the

Assault time series. Offences Against the Person has seen an increase during the late 1970's, 1980's and early 1990's. The rate stabilised from the mid to late 1990's and has shown a decreasing trend over the last four years.

* The offence category of Other Offences Against the Person is not included in Offences Against the Person.

Annual Crime Trends

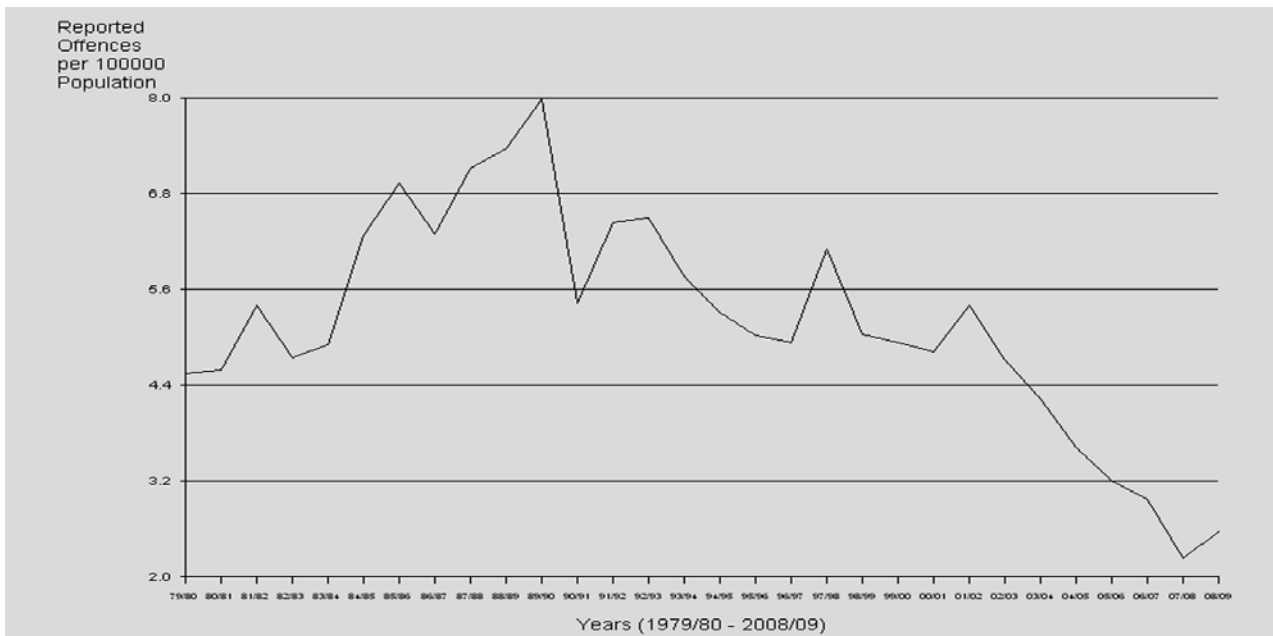
Homicide (Murder)



Homicide (Murder) is a small volume offence and, as such, is subject to sizeable fluctuations from year to year. Overall, however, the Homicide (Murder) rate has changed little. Following a peak in 1996/97, the rate of Homicide (Murder) has

been steadily decreasing. In 2008/09, the Homicide (Murder) rate decreased by 8% and recorded 3 less murders when compared with the previous year.

Other Homicide

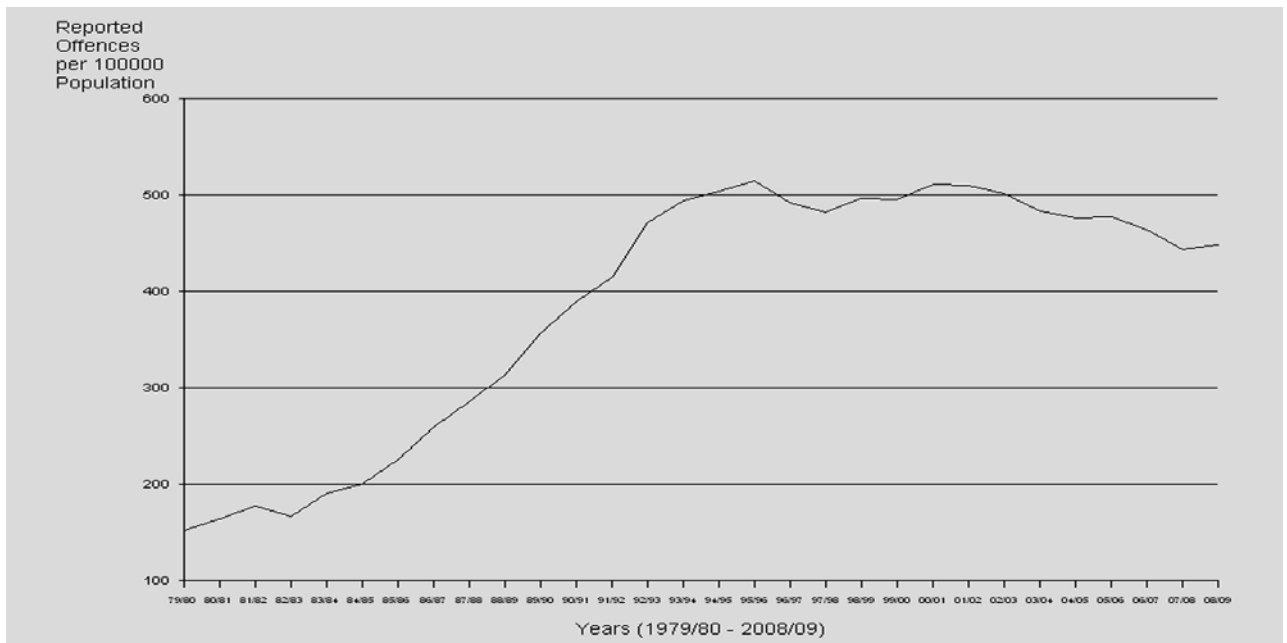


Other Homicide is also a small volume offence category and, as such, is subject to sizeable fluctuations from year to year. From 1987/88 to 1989/90, Other Homicide offences were reported at a slightly higher rate, although the rate has steadily

decreased. In 2008/09 there was a 15% increase in the rate of Other Homicides, largely as a result of a significant increase in Attempted Murder offences.

Annual Crime Trends

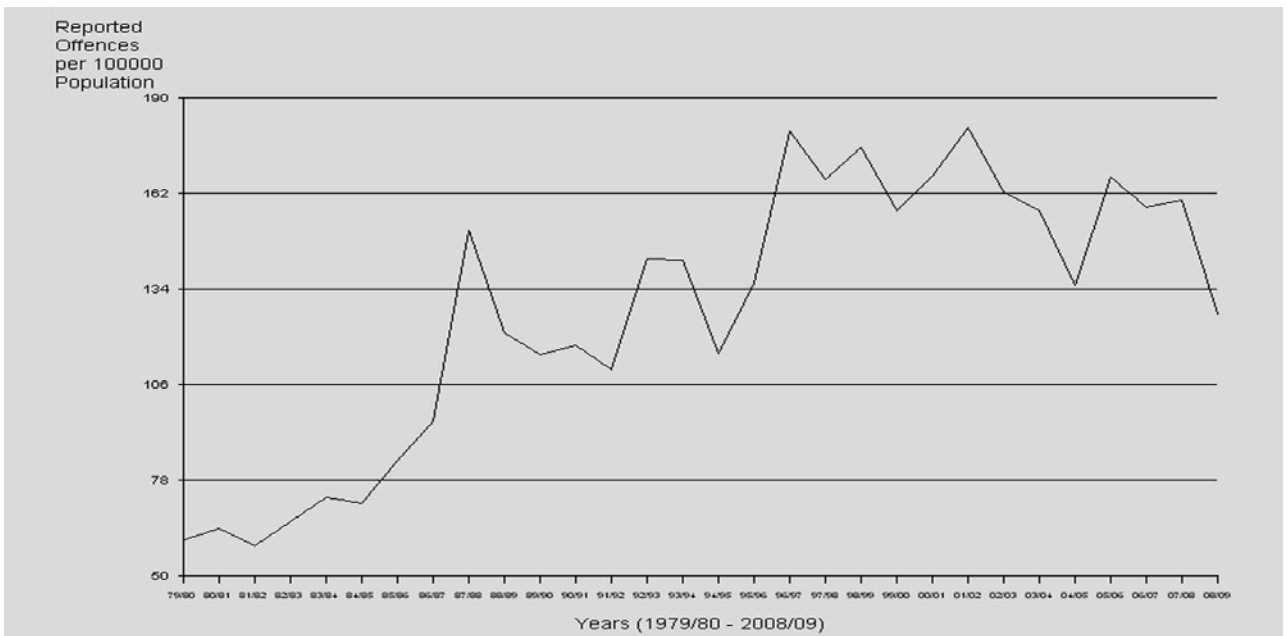
Assault



Looking at the overall trend, the rate of Assaults steadily increased over the late 1970's, 1980's and even into the early 1990's. Since the mid 1990's, the rate of Assault stabilised.

During 2008/09 the rate of Assaults increased by 1% from that reported in the previous year.

Sexual Offences

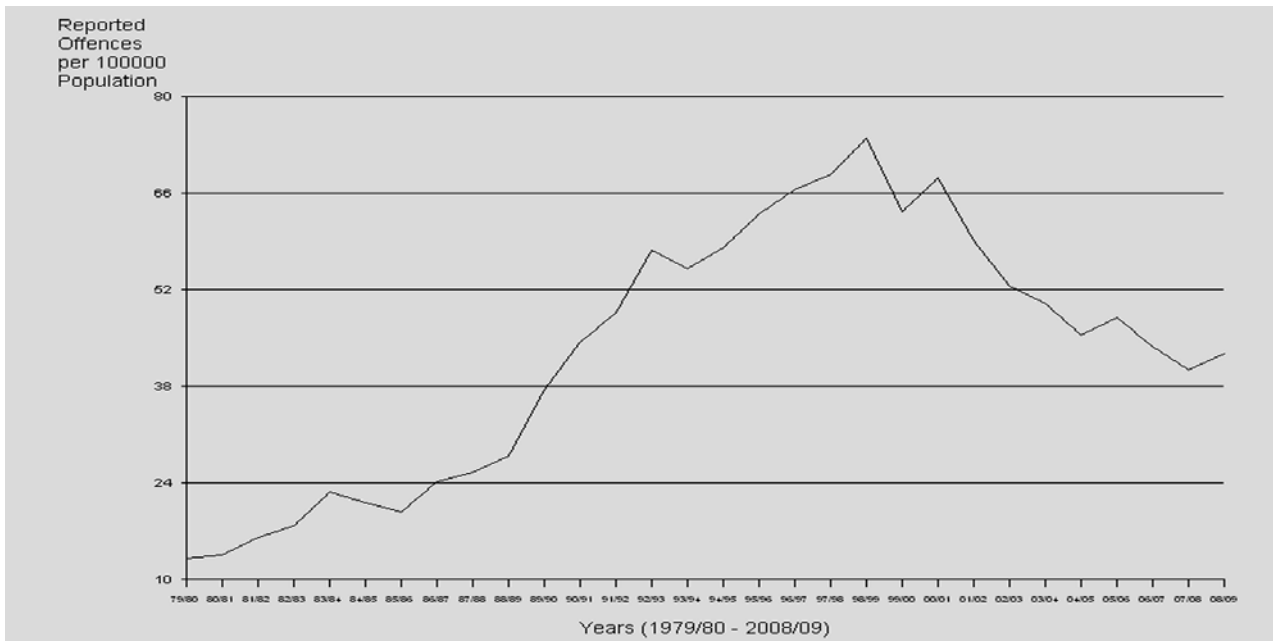


Sexual Offences may be reported to police many years after the offences actually occur and there are often numerous charges preferred against one offender. These factors have resulted in

the fluctuations seen in the graph above. Queensland recorded a decrease of 21% in the rate of Sexual Offences in the year under review compared with the previous year.

Annual Crime Trends

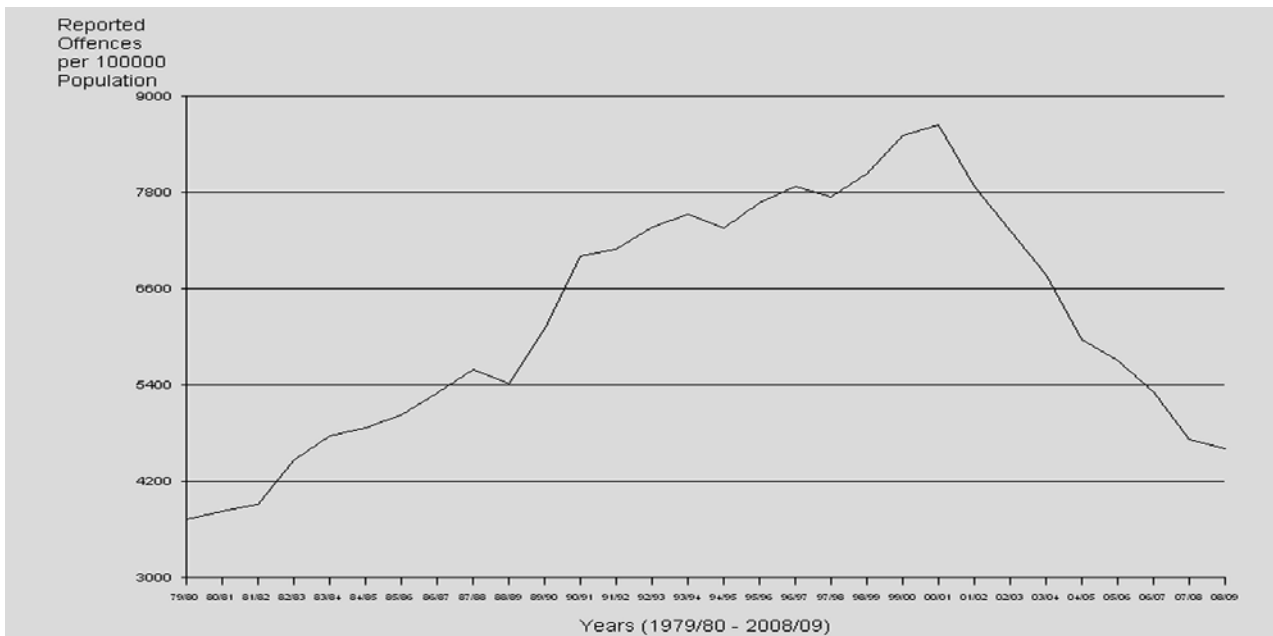
Robbery



Robbery offences increased sharply between 1988/89 and 1998/99. Since then, the overall decreasing trend for Robbery is apparent in the graph above. The rate of Robbery offences

increased in 2008/09 by 6%. This is attributed to increases in both sub-categories of Robbery.

Offences Against Property

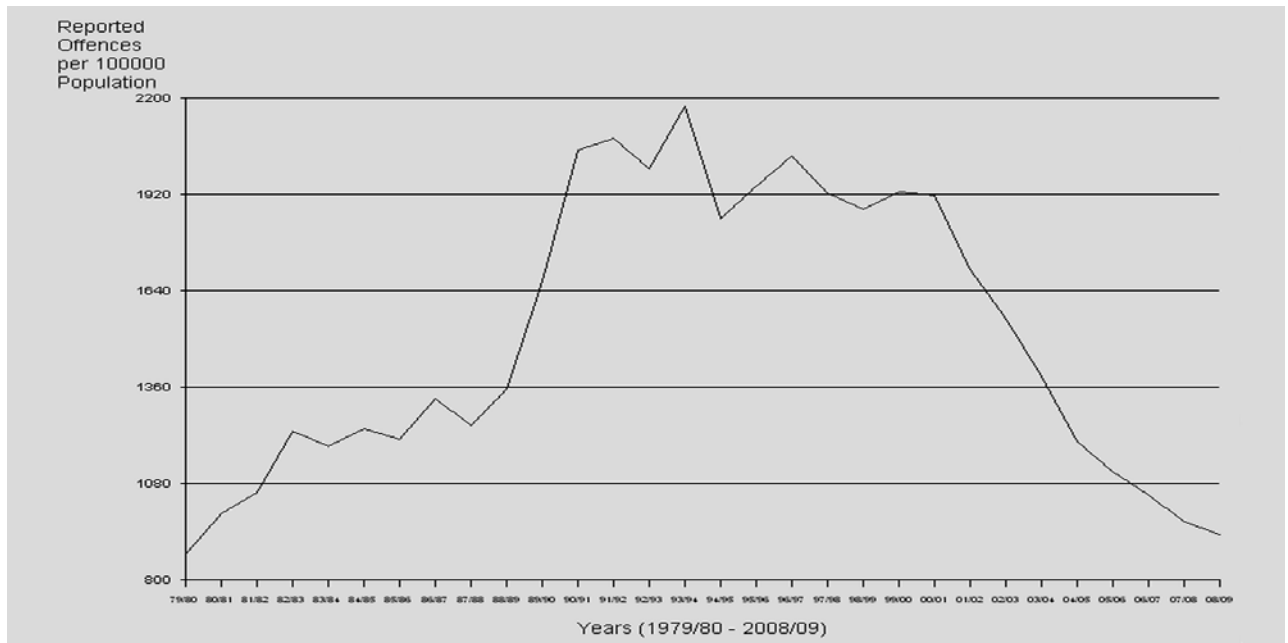


Offences Against Property increased steadily from 1979/80 to 1990/91, although a sharper increase in nearly all property offence sub-categories is reflected in the sharp increase seen from 1988/89 to 1990/91. From 1990/91 the rate increased

slower than was seen previously. Over the last eight years total Offences Against Property has decreased. In 2008/09 total property crime decreased by 2% as a result of decreases in most categories of this offence aggregate.

Annual Crime Trends

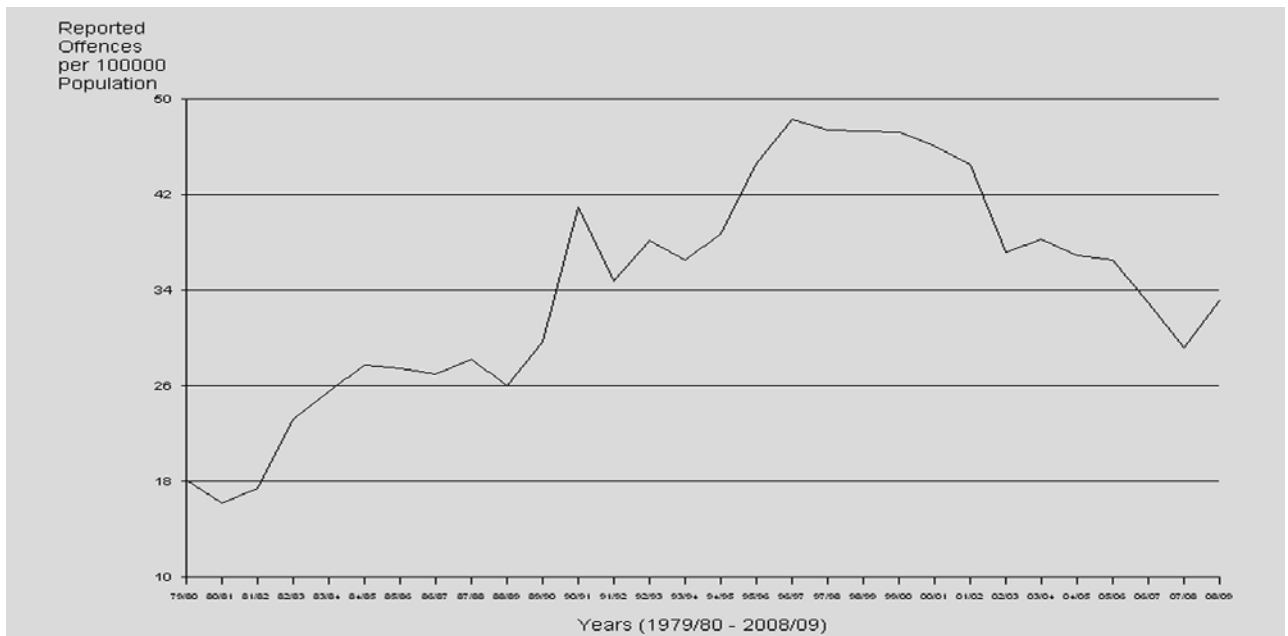
Unlawful Entry Involving Breaking



Following a steady increase in Unlawful Entry Involving Breaking offences from 1979/80 to 1988/89, offences increased suddenly and sharply from 1988/89 to 1990/91. Throughout the 1990's the rate has stabilised and has recorded a decreasing trend

since 2000/01. In particular, the rate of Unlawful Entry Involving Breaking offences fell by 8% in 2007/08, with a further fall of 2% in the current period under review.

Arson

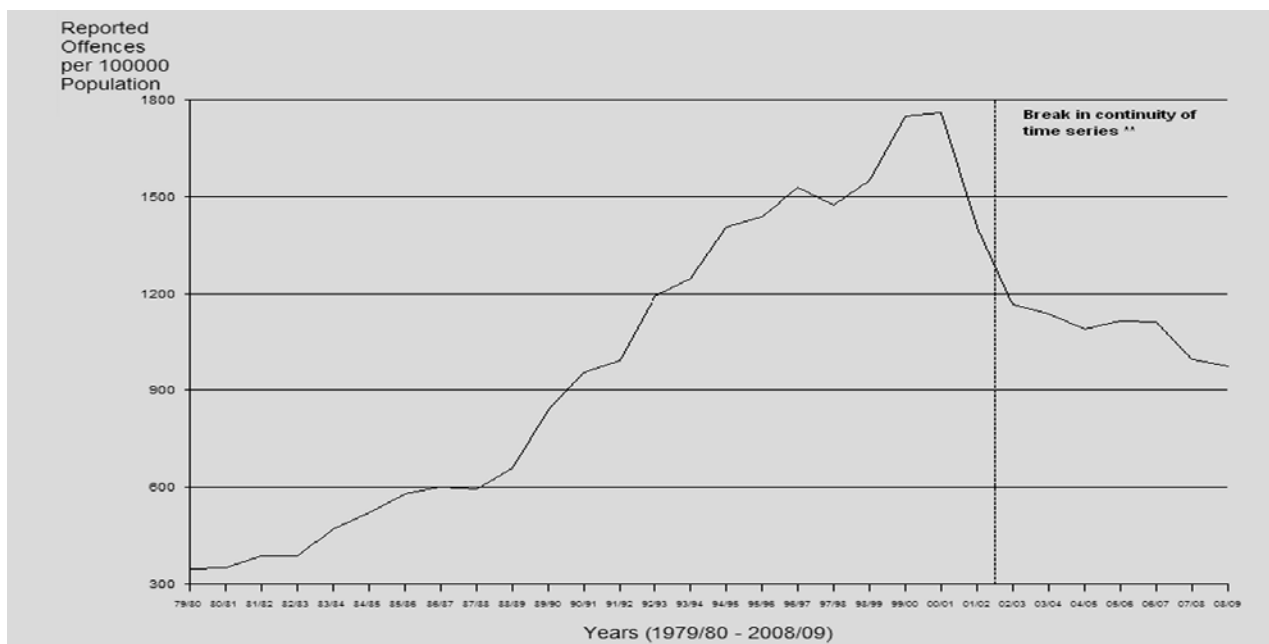


Apart from the sharp increase in the late 1980's and the subsequent decrease in the early 1990's, Arson offences have risen steadily up to 1996/97. Since then, the rate of Arson

offences has declined. Following a decrease in Arson offences of 11% in 2007/08, the current financial year has seen an increase of 14%.

Annual Crime Trends

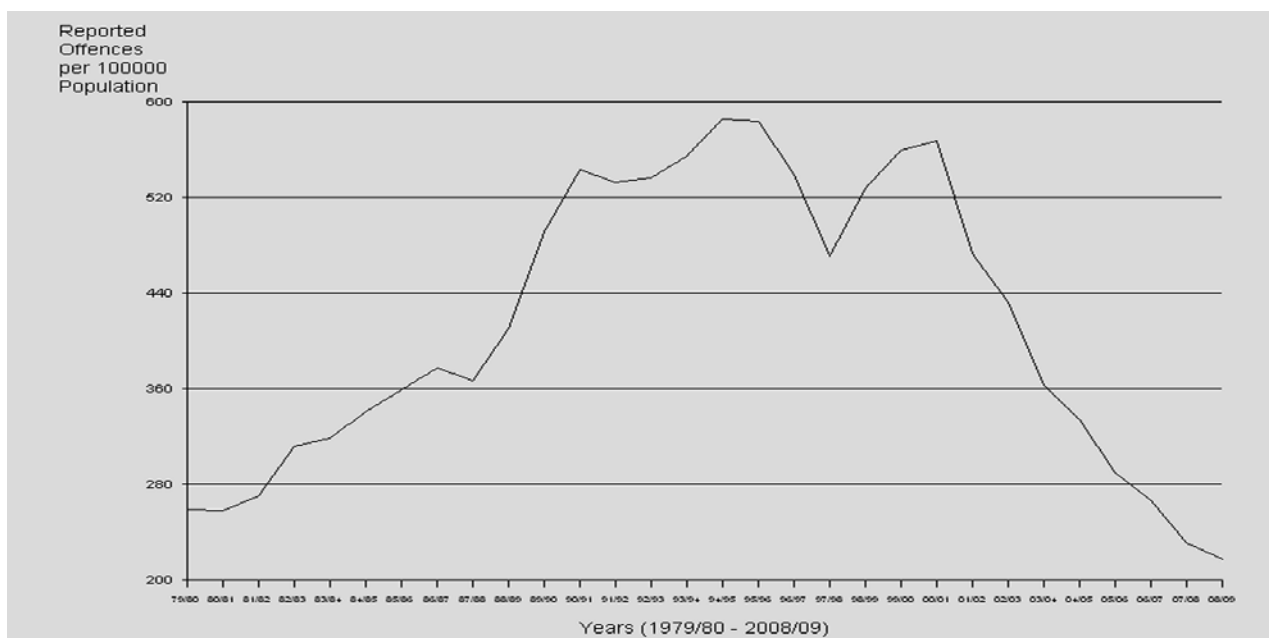
Other Property Damage



This offence category rose steadily up to 2000/01. Since then, Other Property Damage offences have decreased at a sharp rate. A change in recording practices for this offence

contributed to a 20% decrease in the rate for 2001/02. The rate of Other Property Damage offences has decrease over the last two years, recording decrease of 2% and 10% respectively.

*Unlawful Use of Motor Vehicle**



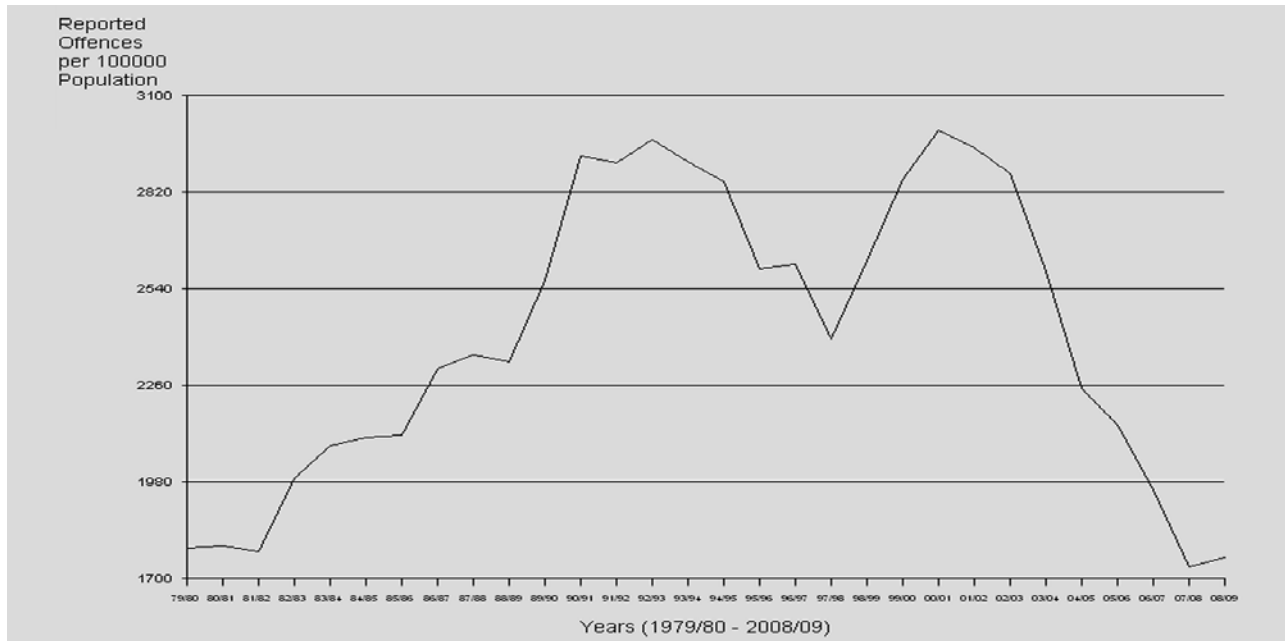
Unlawful Use of Motor Vehicle offences recorded a substantial decrease over the period 1995/96 to 1997/98. Rates then rose sharply to again equal the high rates seen in the mid 1990's. From 2000/01, however, rates again declined. Since 2001/02,

there has been a significant reduction in the rate of Unlawful Use of Motor Vehicle offences. In the current period, the State recorded a decrease of 6%.

** The break in continuity is the result of a policy change implemented in December 2001 (see Explanatory Notes section).
 * The total for Unlawful Use of Motor Vehicle includes attempted offences

Annual Crime Trends

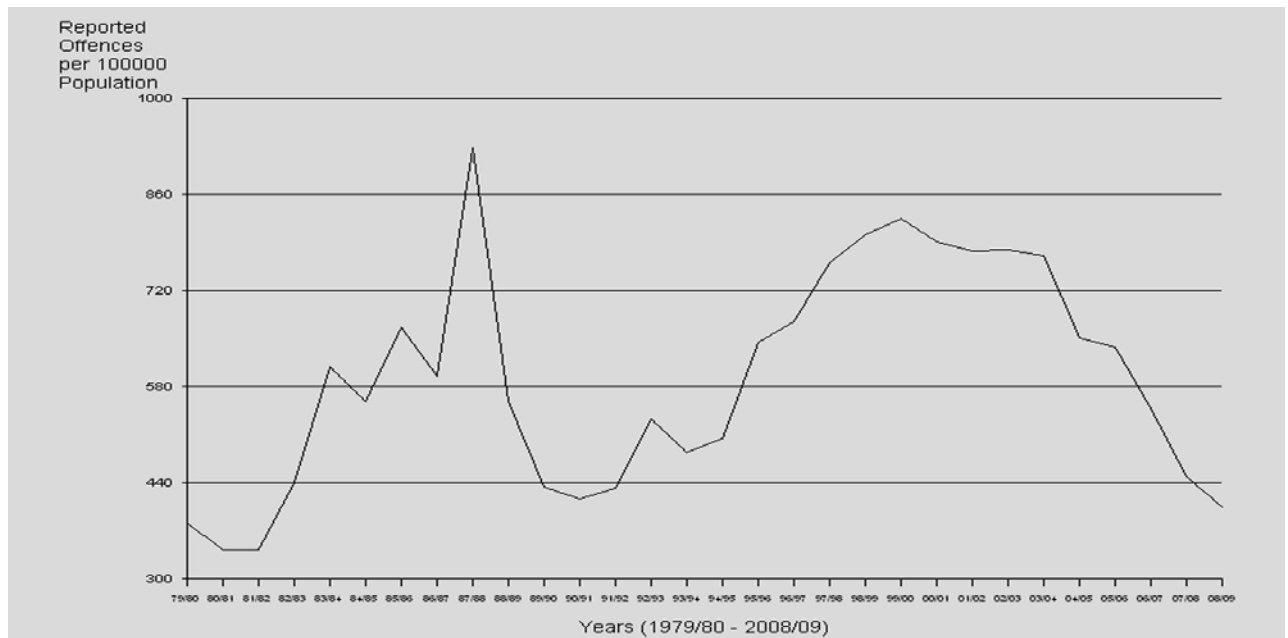
Other Theft (excluding Unlawful Entry)



As with most Offences Against Property sub-categories, the sharp increase recorded during the late 1980's is evident in the graph above and this sharp increase was repeated in the late 1990's. A decreasing trend in Other Theft (excl. Unlawful Entry)

offences was recorded from 2000/01 to 2007/08. However, the current financial year showed a reverse in this trend by recording an increase of 2%.

Fraud

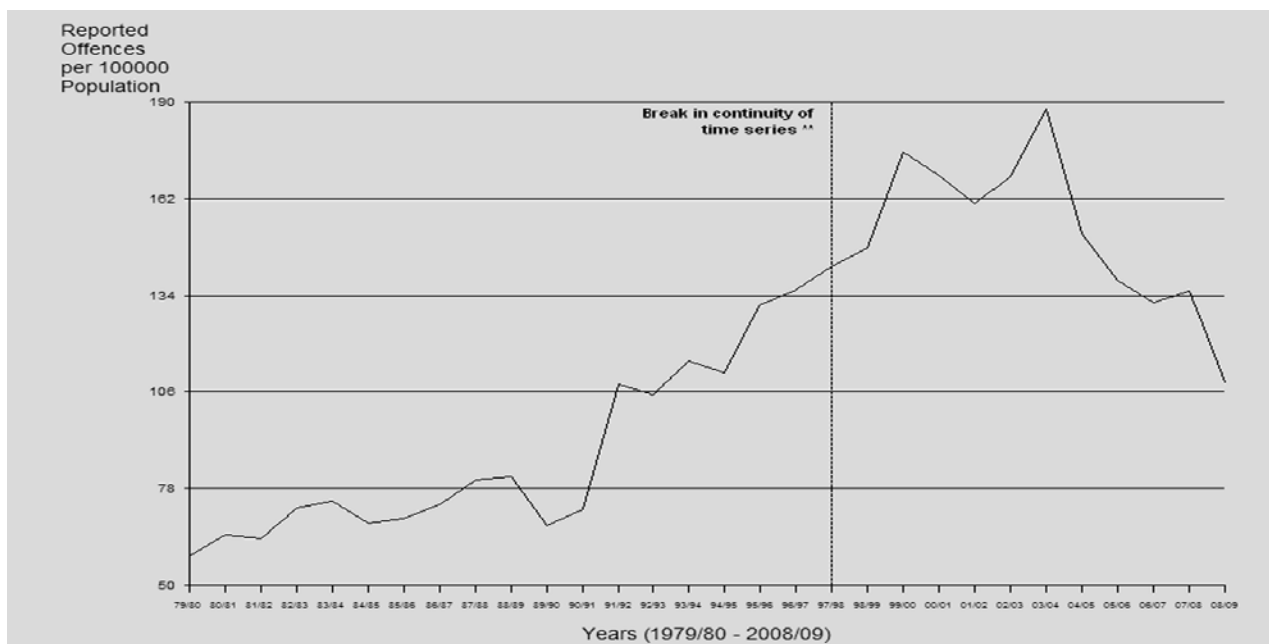


Fraud offences increased sharply from 1979/80 to 1987/88. The sudden decrease from 1987/88 to 1990/91 is due to a change in policy by banking institutions regarding the reporting of offences, rather than an actual reduction in offences. The figures reported for 2000/01 and 2001/02 effectively halted a

steadily increasing trend evident over the last decade. Rates recorded in each year from 2002/03 to 2008/09 have continued this reversal with a 10% reduction reported for the year under review.

Annual Crime Trends

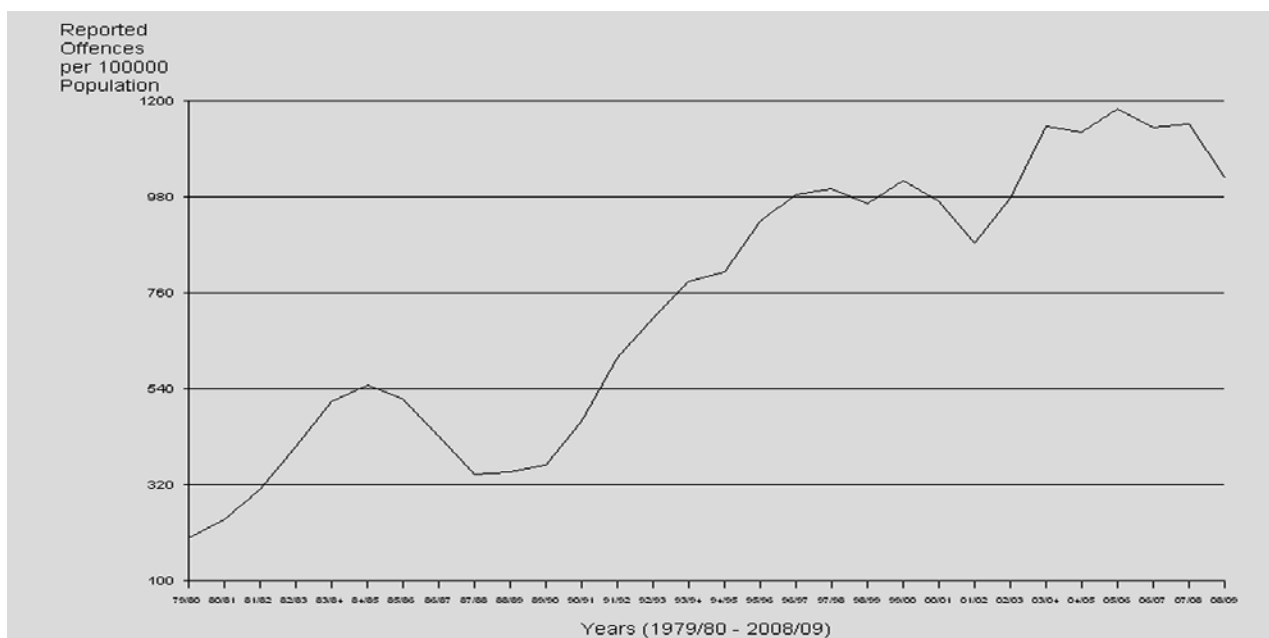
Handling Stolen Goods



Handling Stolen Goods was expanded in 1997/98 to include the sub-categories Possess, Receive, etc. Tainted Property and Other Handling Stolen Goods**. Possess, Receive, etc. Tainted Property is now the largest in volume of the offence sub-

categories resulting in the necessity for caution when making comparisons prior to and following this change. In the year under review, the rate of offences decrease by 20%.

Drug Offences

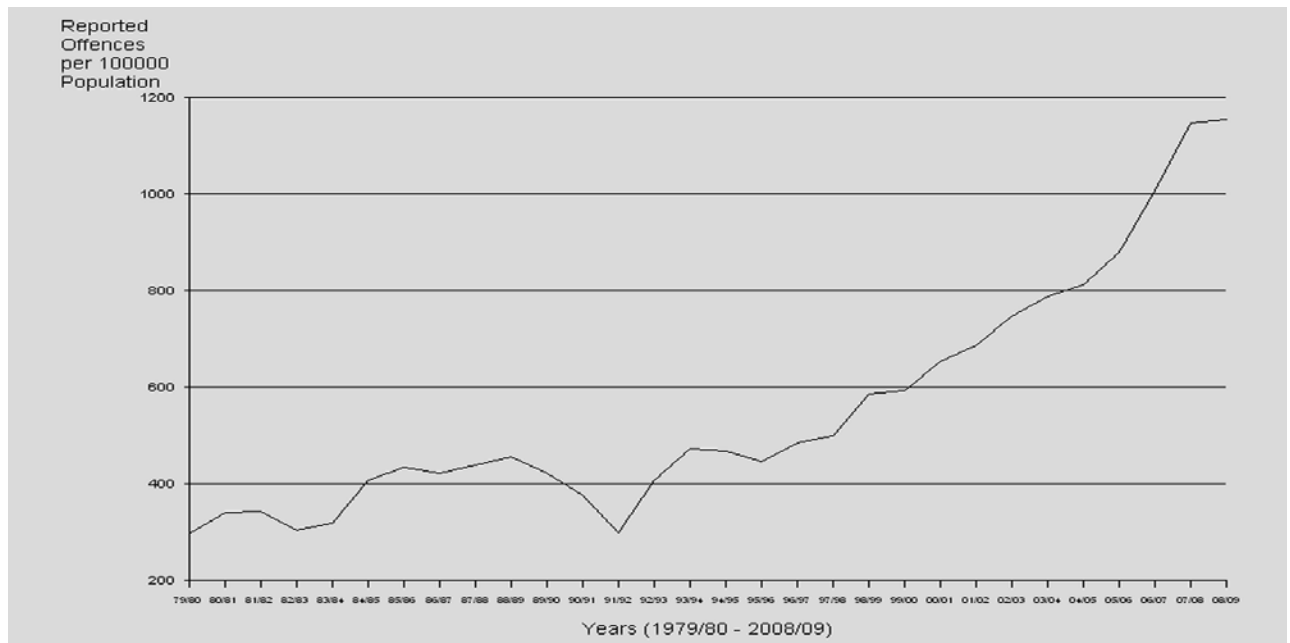


Apart from a period in the mid to late 1980s, possibly due to the reallocation of police resources resulting from the Fitzgerald Inquiry, Drug Offences steadily increased up to 1999/00. The

current period under review has recorded a decrease of 11% in the rate of Drug Offences.

Annual Crime Trends

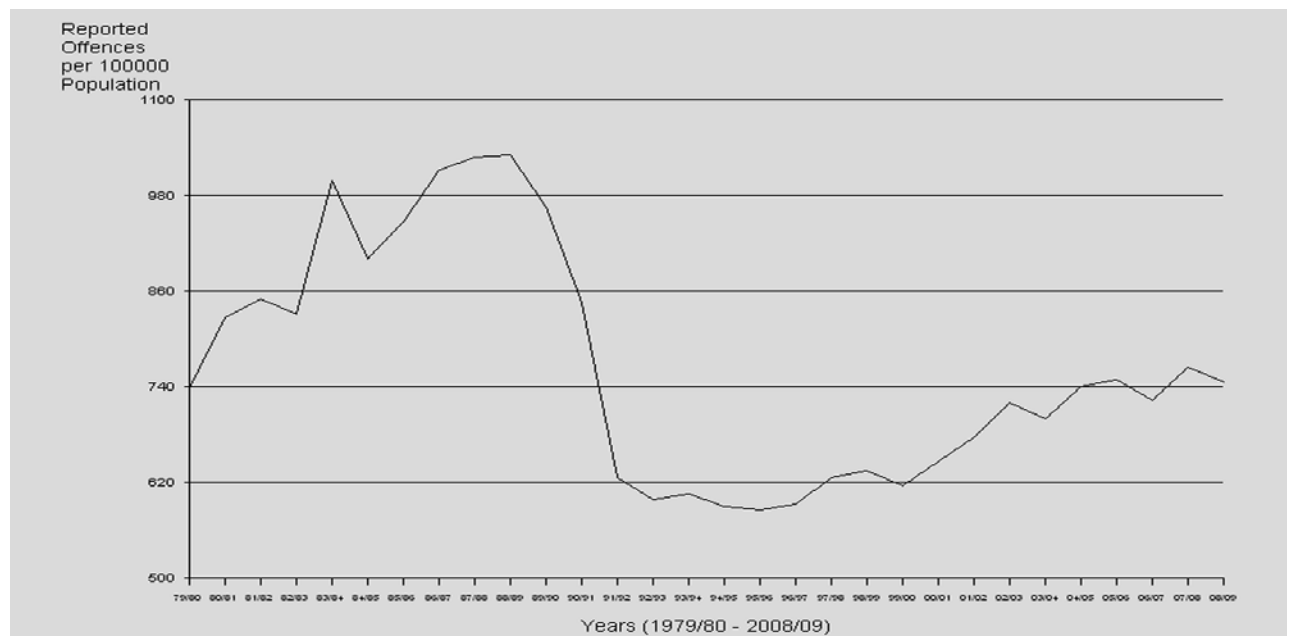
Good Order Offences



A dominant feature of the time series is the decrease in reported Good Order Offences from 1988/89 to 1991/92 and the subsequent increase following that period. Since 1995/96,

Good Order Offences have been steadily increasing and 2008/09 was consistent (increasing 1%).

Drink Driving Offences



Analysis of the Drink Driving offence time series is difficult due to the many changes that have affected the overall trend (see Explanatory Notes, page 150). The graph above highlights the effectiveness of these initiatives as offences have reduced and

remained stable at around 600 offences per 100,000 persons from 1991/92 to 2000/01. In the current period Drink Driving Offences recorded a 2% decrease.

