



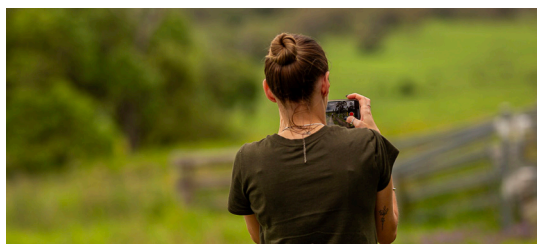
REPORTING SUSPICIOUS ACTIVITY

Protecting your property and rural community starts with reporting suspicious activity. Your report might provide the final piece of information needed for police to solve broader cases and take action against offenders.

Follow these simple steps to help identify and report suspicious activity:


- 
RECOGNISE SIGNS OF SUSPICIOUS ACTIVITIES
 Suspicious activity refers to anything that appears unusual or out-of-place on your property or in your community. This may include unusual movements of vehicles, people, or livestock.

 You have a sense of what is typical for your property and community. If you observe something that feels off, it is always best to report it.
- 
RECORD THE DETAILS
 - Include descriptions of vehicles, such as make, model, colour, and registration number.
 - Record descriptions of individuals, noting gender, age, height, clothing, and any distinguishing features (tattoos, scars, etc).
 - Specify the time, date, and location of the suspicious activity.
 - Take photos or videos if it is safe to do so.
- 
REACH OUT TO COMMUNITY
 Reach out and connect with neighbouring properties to create a network of support. Look out for one another and share valuable information.



REPORT INCIDENTS PROMPTLY

If you see or hear unusual movements of vehicles, people, or livestock, it is important to report these observations as soon as possible.

000 If a crime is happening now, call **Triple Zero (000)**.


 If not, think **PoliceLink**. Call **131 444** or visit **police.qld.gov.au/reporting**.



To report crime anonymously, call **Crime Stoppers** on **1800 333 000** or visit **crimestoppersqld.com.au**.



Licence URL: <http://creativecommons.org/licenses/by/4.0/legalcode>. Please give attribution to: © State of Queensland (Queensland Police Service) 2025

For more information visit:
www.police.qld.gov.au/RuralCrimePrevention

